

## Product datasheet for **TA326351**

### HIF 2 alpha (EPAS1) Mouse Monoclonal Antibody [Clone ID: EP190B]

#### Product data:

Product Type:	Primary Antibodies
Clone Name:	EP190B
Applications:	IHC, WB
Recommended Dilution:	WB: 1:100-1:500
Reactivity:	Human
Host:	Mouse
Isotype:	IgG1
Clonality:	Monoclonal
Immunogen:	GST-human EPAS-1 (HIF2alpha) amino acids 535-631 fusion protein
Formulation:	PBS pH7.4, 50% glycerol
Concentration:	lot specific
Purification:	Protein G Purified
Conjugation:	Unconjugated
Storage:	Store at -20°C as received.
Stability:	Stable for 12 months from date of receipt.
Gene Name:	endothelial PAS domain protein 1
Database Link:	<a href="#">NP_001421</a> <a href="#">Entrez Gene 2034 Human</a> <a href="#">Q99814</a>

**Background:** Members of the hypoxia-inducible factor (HIF) family of transcription factors regulate the cellular response to hypoxia . HIF2-Alpha is involved in catecholamine homeostasis, vascular remodeling, physiological angiogenesis and adipogenesis. It is overexpressed in many cancerous tissues, but its exact role in tumour progression remains to be clarified . Studies suggest that in the case of non-small cell lung cancer, HIF2-Alpha actually is a promoter of tumor growth and progression in a solid tumor . Other data suggests that HIF2-Alpha is an important regulator of innate immunity, and therefore may be useful in the therapeutic target for treating inflammatory disorders and cancer .

**Synonyms:** bHLHe73; ECYT4; HIF2A; HLF; MOP2; PASD2



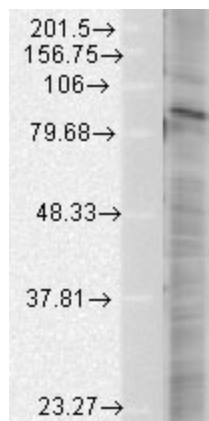
[View online »](#)

**Note:** Human

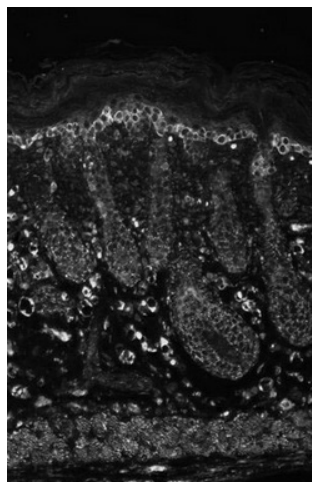
**Protein Families:** Druggable Genome, Transcription Factors

**Protein Pathways:** Pathways in cancer, Renal cell carcinoma

**Product images:**



Western blot analysis of HIF2 Alpha in CoCl<sub>2</sub> treated HeLa lysates, using a 1:1000 dilution of the antibody



IHC analysis of HIF2Alpha using mouse backskin sections. Courtesy of Dr. Turksen, Ottawa Hospital Research Institute.