

## Product datasheet for **TA326348**

### CENPA Mouse Monoclonal Antibody [Clone ID: 5A7-2E11]

#### Product data:

Product Type:	Primary Antibodies
Clone Name:	5A7-2E11
Applications:	WB
Recommended Dilution:	WB: 1:1000
Reactivity:	Human
Host:	Mouse
Isotype:	IgG1
Clonality:	Monoclonal
Immunogen:	Synthetic peptide corresponding to a portion of human CENP-A.
Formulation:	PBS, 50% glycerol
Concentration:	lot specific
Purification:	Protein G Purified
Conjugation:	Unconjugated
Storage:	Store at -20°C as received.
Stability:	Stable for 12 months from date of receipt.
Gene Name:	centromere protein A
Database Link:	<a href="#">NP_001800</a> <a href="#">Entrez Gene 1058 Human</a> <a href="#">P49450</a>

**Background:** A replicated chromosome includes two kinetochores that control chromosome segregation during mitosis. The Centromere Protein-A, CENP-A, is a Histone H3-like protein that contains a C-terminal H3-like domain, which is required for centromere localization of CENP-A, and an antigenic N-terminal domain. CENP-A, originally isolated from HeLa cells, is essential for kinetochore targeting of CENP-C. In the presence of DNA CENP-A forms an octa-meric complex with histones H4, H2A, H2B. CENP-A specifically localizes to active centromeres and is a component of specialized centromeric nucleosomes, on which kinetochores are assembled. CENP-A is essential for nucleosomal packaging of centromeric DNA at interphase and functions as a centromere formation marker on the chromosome.

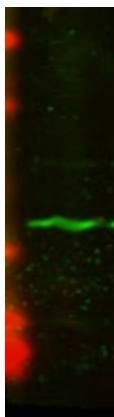


[View online »](#)

**Synonyms:** CenH3; CENP-A

**Note:** Detects ~18kDa. Recognizes Human CENP-A

**Product images:**



Western blot analysis of CENP-A in U2OS lysates using a 1:1000 dilution of the antibody