

## Product datasheet for **TA326340**

### Caspr (CNTNAP1) Mouse Monoclonal Antibody [Clone ID: S65-35]

#### Product data:

Product Type:	Primary Antibodies
Clone Name:	S65-35
Applications:	IHC, WB
Recommended Dilution:	WB: 1ug/ml, IHC: 0.1-1ug/ml, IF: 1-10ug/ml
Reactivity:	Human, Mouse, Rat
Host:	Mouse
Isotype:	IgG1
Clonality:	Monoclonal
Immunogen:	Fusion protein 1308-1381 (cytoplasmic domain) of rat CASPR
Formulation:	PBS pH7.4, 50% glycerol
Concentration:	lot specific
Purification:	Protein G Purified
Conjugation:	Unconjugated
Storage:	Store at -20°C as received.
Stability:	Stable for 12 months from date of receipt.
Gene Name:	contactin associated protein 1
Database Link:	<a href="#">NP_003623</a> <a href="#">Entrez Gene 53321 Mouse</a> <a href="#">Entrez Gene 84008 Rat</a> <a href="#">Entrez Gene 8506 Human</a> <a href="#">P78357</a>

**Background:** Caspr (contactin-associated protein) is a part of the neurexin family. It lies in the paranodal section of the myelin sheath. Its role is for myelin sheath attachment along with contactin in a cis-complex. Caspr and Caspr2 regulate the formation of distinct axonal domains around the nodes of Ranvier. Caspr is required for the generation of a membrane barrier at the paranodal junction, whereas Caspr serves as a membrane scaffold that clusters Kv1 channels at the juxtaparanodal region. Both interact with protein 4.1B.

**Synonyms:** CASPR; CNTNAP; NRXN4; P190

**Note:** Detects ~220kDa.

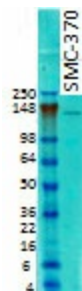


[View online »](#)

**Protein Families:** Druggable Genome, Transmembrane

**Protein Pathways:** Cell adhesion molecules (CAMs)

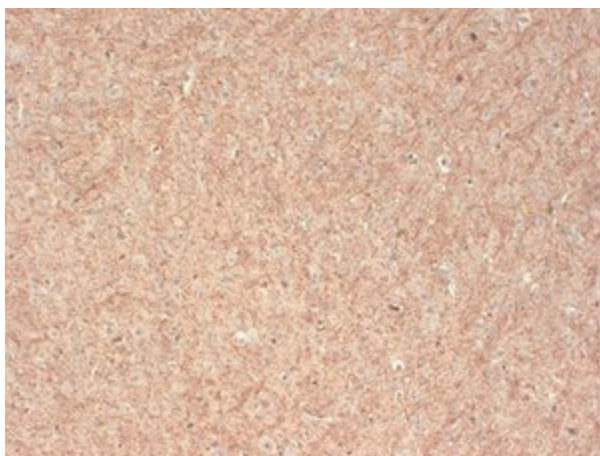
**Product images:**



Western blot analysis of CASPR on rat brain membrane tissues using a 1:1000 dilution of the antibody



IHC analysis of CASPR using the antibody



IHC analysis of CASPR using the antibody