

Product datasheet for **TA326339**

Synaptophysin (SYP) Mouse Monoclonal Antibody [Clone ID: EP10]

Product data:

Product Type:	Primary Antibodies
Clone Name:	EP10
Applications:	IHC
Recommended Dilution:	WB: 1.0ug/ml
Reactivity:	Human
Host:	Mouse
Isotype:	IgG1
Clonality:	Monoclonal
Immunogen:	Immunoprecipitate of human brain
Formulation:	PBS pH7.4, 50% glycerol
Concentration:	lot specific
Purification:	Protein G Purified
Conjugation:	Unconjugated
Storage:	Store at -20°C as received.
Stability:	Stable for 12 months from date of receipt.
Gene Name:	synaptophysin
Database Link:	NP_003170 Entrez Gene 6855 Human P08247

Background: Synaptophysin is a synaptic vesicle glycoprotein with four transmembrane domains weighing 38kDa . It is present in neuroendocrine cells and in virtually all neurons in the brain and spinal cord that participate in synaptic transmission. It acts as a marker for the presynaptic vesicle, and functions in synaptic vesicle exocytosis, including cholesterol-dependent vesicle biogenesis, regulation of SNARE assembly via interaction with VAMP/synaptobrevin, formation of the fusion pore initiating neurotransmitter release, and activation of vesicle endocytosis . This gene has also been implicated in X linked mental retardation .

Synonyms: MRX96; MRXSYP

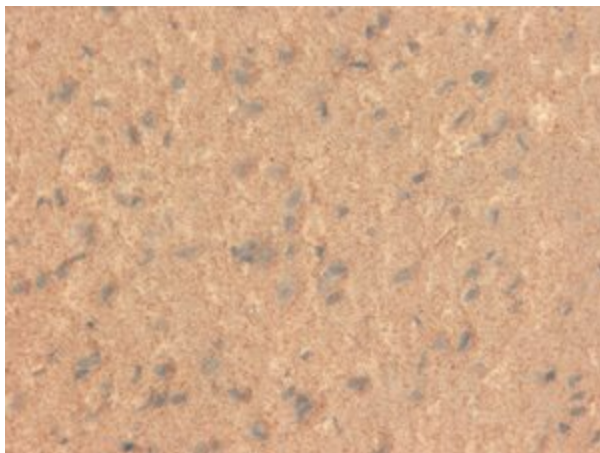


[View online »](#)

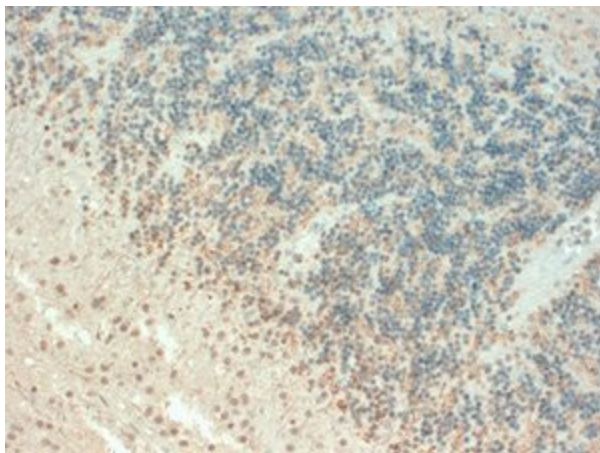
Note: Detects ~38kDa.

Protein Families: Secreted Protein, Transmembrane

Product images:



IHC analysis of Synaptophysin using the antibody



IHC analysis of Synaptophysin using the antibody