

Product datasheet for **TA326333**

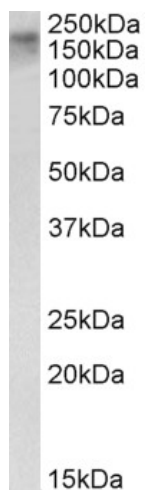
CSB (ERCC6) Goat Polyclonal Antibody

Product data:

Product Type:	Primary Antibodies
Applications:	WB
Reactivity:	Human (Expected from sequence similarity: Mouse, Rat, Dog, Pig, Cow)
Host:	Goat
Clonality:	Polyclonal
Immunogen:	Peptide with sequence SNASPVQVKTAYKCA, from the internal region of the protein sequence according to NP_000115.1.
Formulation:	Supplied at 0.5 mg/ml in Tris saline, 0.02% sodium azide, pH7.3 with 0.5% bovine serum albumin.
Concentration:	lot specific
Purification:	Purified from goat serum by ammonium sulphate precipitation followed by antigen affinity chromatography using the immunizing peptide.
Conjugation:	Unconjugated
Storage:	Store at -20°C as received.
Stability:	Stable for 12 months from date of receipt.
Predicted Protein Size:	168 kDa
Gene Name:	ERCC excision repair 6, chromatin remodeling factor
Database Link:	NP_000115 Entrez Gene 306274 Rat Entrez Gene 319955 Mouse Entrez Gene 477747 Dog Entrez Gene 2074 Human Q03468
Synonyms:	ARMD5; CKN2; COFS; COFS1; CSB; RAD26; UVSS1
Protein Families:	Druggable Genome
Protein Pathways:	Nucleotide excision repair



[View online »](#)

Product images:

TA326333 (0.3ug/ml) staining of HeLa nuclear lysate (35ug protein in RIPA buffer). Primary incubation was 1 hour. Detected by chemiluminescence.