

Product datasheet for **TA326332**

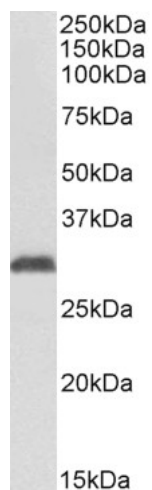
NAT1 Goat Polyclonal Antibody

Product data:

| | |
|-------------------------|---|
| Product Type: | Primary Antibodies |
| Applications: | WB |
| Reactivity: | Human |
| Host: | Goat |
| Clonality: | Polyclonal |
| Immunogen: | Peptide with sequence C-NISLQRKLVPHGDR, from the C Terminus of the protein sequence according to NP_000653.3; NP_001153647.1. |
| Formulation: | Supplied at 0.5 mg/ml in Tris saline, 0.02% sodium azide, pH7.3 with 0.5% bovine serum albumin. |
| Concentration: | lot specific |
| Purification: | Purified from goat serum by ammonium sulphate precipitation followed by antigen affinity chromatography using the immunizing peptide. |
| Conjugation: | Unconjugated |
| Storage: | Store at -20°C as received. |
| Stability: | Stable for 12 months from date of receipt. |
| Predicted Protein Size: | 33.9 kDa |
| Gene Name: | N-acetyltransferase 1 (arylamine N-acetyltransferase) |
| Database Link: | NP_000653 Entrez Gene 9 Human P18440 |
| Synonyms: | AAC1; MNAT; NAT-1; NATI |
| Protein Pathways: | Caffeine metabolism, Drug metabolism - other enzymes, Metabolic pathways |



[View online »](#)

Product images:

TA326332 (1ug/ml) staining of Human Erythrocytes lysate (35ug protein in RIPA buffer). Primary incubation was 1 hour. Detected by chemiluminescence.