

## Product datasheet for **TA326328**

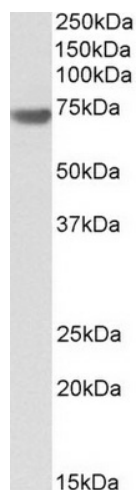
### **BAG3 Goat Polyclonal Antibody**

#### **Product data:**

<b>Product Type:</b>	Primary Antibodies
<b>Applications:</b>	IHC, WB
<b>Recommended Dilution:</b>	ELISA:1:16000.WB:0.1-0.3 µg/ml.IHC:5µg/ml.
<b>Reactivity:</b>	Human
<b>Host:</b>	Goat
<b>Clonality:</b>	Polyclonal
<b>Immunogen:</b>	Peptide with sequence C-KNAGNAEDPHTE, from the internal region of the protein sequence according to NP_004272.2.
<b>Formulation:</b>	Supplied at 0.5 mg/ml in Tris saline, 0.02% sodium azide, pH7.3 with 0.5% bovine serum albumin.
<b>Concentration:</b>	lot specific
<b>Purification:</b>	Purified from goat serum by ammonium sulphate precipitation followed by antigen affinity chromatography using the immunizing peptide.
<b>Conjugation:</b>	Unconjugated
<b>Storage:</b>	Store at -20°C as received.
<b>Stability:</b>	Stable for 12 months from date of receipt.
<b>Predicted Protein Size:</b>	61.6 kDa
<b>Gene Name:</b>	BCL2 associated athanogene 3
<b>Database Link:</b>	<a href="#">NP_004272</a> <a href="#">Entrez Gene 9531 Human</a> <a href="#">O95817</a>
<b>Synonyms:</b>	BAG-3; BIS; CAIR-1; MFM6
<b>Protein Families:</b>	Druggable Genome



[View online »](#)

**Product images:**

TA326328 (0.1ug/ml) staining of Human Pancreas lysate (35ug protein in RIPA buffer). Primary incubation was 1 hour. Detected by chemiluminescence.