

Product datasheet for **TA326326**

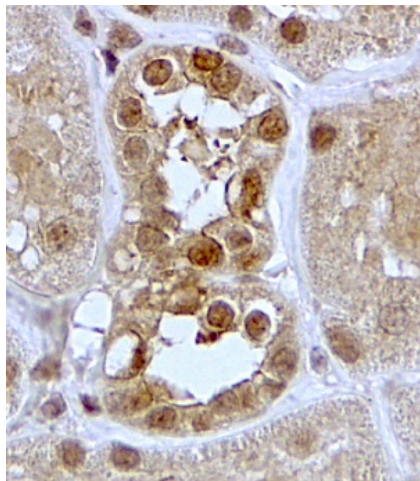
SGK1 Goat Polyclonal Antibody

Product data:

Product Type:	Primary Antibodies
Applications:	IHC
Reactivity:	Human (Expected from sequence similarity: Mouse, Rat, Dog, Cow, Rabbit)
Host:	Goat
Clonality:	Polyclonal
Immunogen:	Peptide with sequence C-TEEPVPNSIGKSPD, from the C Terminus of the protein sequence according to NP_005618.2.
Formulation:	Supplied at 0.5 mg/ml in Tris saline, 0.02% sodium azide, pH7.3 with 0.5% bovine serum albumin.
Concentration:	lot specific
Purification:	Purified from goat serum by ammonium sulphate precipitation followed by antigen affinity chromatography using the immunizing peptide.
Conjugation:	Unconjugated
Storage:	Store at -20°C as received.
Stability:	Stable for 12 months from date of receipt.
Gene Name:	serum/glucocorticoid regulated kinase 1
Database Link:	NP_005618 Entrez Gene 20393 Mouse Entrez Gene 29517 Rat Entrez Gene 403647 Dog Entrez Gene 6446 Human O00141
Synonyms:	SGK
Protein Families:	Druggable Genome, Protein Kinase



[View online »](#)

Product images:

TA326326 (2ug/ml) staining of paraffin embedded Human Kidney. Steamed antigen retrieval with citrate buffer pH 6, HRP-staining.