

Product datasheet for **TA326322**

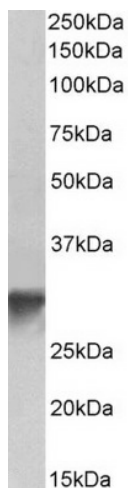
GOLPH3 Goat Polyclonal Antibody

Product data:

Product Type:	Primary Antibodies
Applications:	WB
Reactivity:	Human (Expected from sequence similarity: Mouse, Dog, Cow)
Host:	Goat
Clonality:	Polyclonal
Immunogen:	Peptide with sequence C-DLATKRVRQLLDLD, from the internal region of the protein sequence according to NP_071413.1.
Formulation:	Supplied at 0.5 mg/ml in Tris saline, 0.02% sodium azide, pH7.3 with 0.5% bovine serum albumin.
Concentration:	lot specific
Purification:	Purified from goat serum by ammonium sulphate precipitation followed by antigen affinity chromatography using the immunizing peptide.
Conjugation:	Unconjugated
Storage:	Store at -20°C as received.
Stability:	Stable for 12 months from date of receipt.
Predicted Protein Size:	33.8 kDa
Gene Name:	golgi phosphoprotein 3
Database Link:	NP_071413 Entrez Gene 66629 Mouse Entrez Gene 489241 Dog Entrez Gene 64083 Human Q9H4A6
Synonyms:	GOPP1; GPP34; MIDAS; Vps74



[View online »](#)

Product images:

TA326322 (0.3ug/ml) staining of Human Platelets lysate (35ug protein in RIPA buffer). Primary incubation was 1 hour. Detected by chemiluminescence.