

Product datasheet for **TA326320**

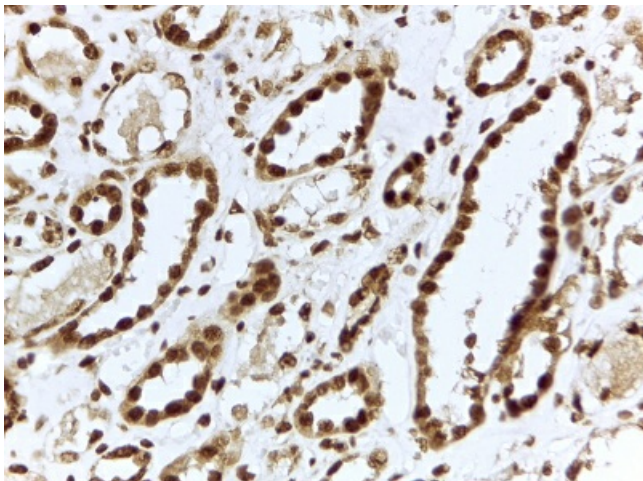
ILF3 Goat Polyclonal Antibody

Product data:

Product Type:	Primary Antibodies
Applications:	IHC
Reactivity:	Human (Expected from sequence similarity: Rat, Dog, Cow)
Host:	Goat
Clonality:	Polyclonal
Immunogen:	Peptide with sequence C-QKPSYGSYGQSHQGQ, from the internal region of the protein sequence according to NP_036350.2; NP_060090.2.
Formulation:	Supplied at 0.5 mg/ml in Tris saline, 0.02% sodium azide, pH7.3 with 0.5% bovine serum albumin.
Concentration:	lot specific
Purification:	Purified from goat serum by ammonium sulphate precipitation followed by antigen affinity chromatography using the immunizing peptide.
Conjugation:	Unconjugated
Storage:	Store at -20°C as received.
Stability:	Stable for 12 months from date of receipt.
Gene Name:	interleukin enhancer binding factor 3
Database Link:	NP_703194 Entrez Gene 84472 Rat Entrez Gene 484950 Dog Entrez Gene 3609 Human Q12906
Synonyms:	CBTF; DRBF; DRBP76; MMP4; MPHOSPH4; MPP4; NF-AT-90; NF90; NF90a; NF90b; NF110; NF110b; NFAR; NFAR-1
Protein Families:	Druggable Genome, Transcription Factors



[View online »](#)

Product images:

TA326320 (2ug/ml) staining of paraffin embedded Human Kidney. Steamed antigen retrieval with citrate buffer pH 6, HRP-staining.