

## Product datasheet for **TA326319**

### SERCA2 (ATP2A2) Goat Polyclonal Antibody

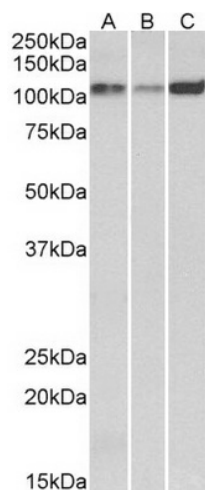
#### Product data:

Product Type:	Primary Antibodies
Applications:	WB
Reactivity:	Human, Mouse, Rat (Expected from sequence similarity: Dog, Pig)
Host:	Goat
Clonality:	Polyclonal
Immunogen:	Peptide with sequence DELNPSAQRDACLN, from the internal region of the protein sequence according to NP_001672.1; NP_733765.1.
Formulation:	Supplied at 0.5 mg/ml in Tris saline, 0.02% sodium azide, pH7.3 with 0.5% bovine serum albumin.
Concentration:	lot specific
Purification:	Purified from goat serum by ammonium sulphate precipitation followed by antigen affinity chromatography using the immunizing peptide.
Conjugation:	Unconjugated
Storage:	Store at -20°C as received.
Stability:	Stable for 12 months from date of receipt.
Predicted Protein Size:	110 kDa
Gene Name:	ATPase sarcoplasmic/endoplasmic reticulum Ca <sup>2+</sup> transporting 2
Database Link:	<a href="#">NP_733765</a> <a href="#">Entrez Gene 11938 Mouse</a> <a href="#">Entrez Gene 29693 Rat</a> <a href="#">Entrez Gene 403878 Dog</a> <a href="#">Entrez Gene 488 Human</a> <a href="#">P16615</a>
Synonyms:	ATP2B; DAR; DD; SERCA2
Protein Families:	Druggable Genome, Transmembrane
Protein Pathways:	Alzheimer's disease, Arrhythmogenic right ventricular cardiomyopathy (ARVC), Calcium signaling pathway, Cardiac muscle contraction, Dilated cardiomyopathy, Hypertrophic cardiomyopathy (HCM)



[View online »](#)

## Product images:



TA326319 (0.1ug/ml) staining of Human (A), Mouse (B) and Rat (C) Heart lysates (35ug protein in RIPA buffer). Primary incubation was 1 hour. Detected by chemiluminescence.