

## Product datasheet for **TA326317**

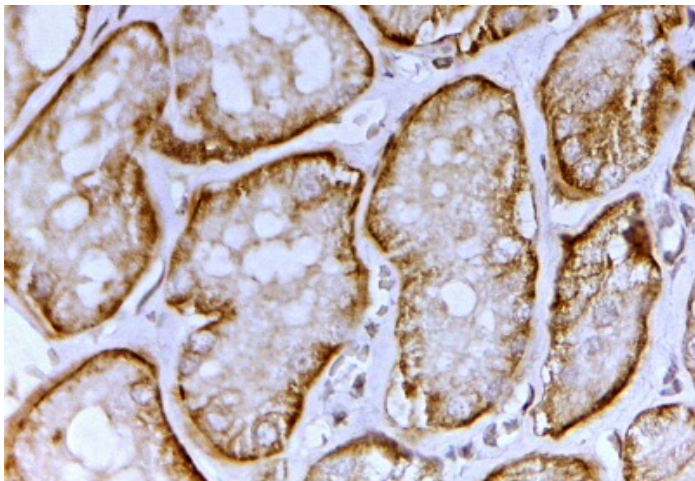
### SLC26A1 Goat Polyclonal Antibody

#### Product data:

Product Type:	Primary Antibodies
Applications:	IHC
Reactivity:	Human
Host:	Goat
Clonality:	Polyclonal
Immunogen:	Peptide with sequence C-QTARARHRELEATD, from the C Terminus of the protein sequence according to NP_071325.2; NP_602297.1.
Formulation:	Supplied at 0.5 mg/ml in Tris saline, 0.02% sodium azide, pH7.3 with 0.5% bovine serum albumin.
Concentration:	lot specific
Purification:	Purified from goat serum by ammonium sulphate precipitation followed by antigen affinity chromatography using the immunizing peptide.
Conjugation:	Unconjugated
Storage:	Store at -20°C as received.
Stability:	Stable for 12 months from date of receipt.
Gene Name:	solute carrier family 26 member 1
Database Link:	<a href="#">NP_998778</a> <a href="#">Entrez Gene 10861 Human</a> <a href="#">Q9H2B4</a>
Synonyms:	CAON; EDM4; SAT-1; SAT1
Protein Families:	Transmembrane



[View online »](#)

**Product images:**

TA326317 (2ug/ml) staining of paraffin embedded Human Kidney. Steamed antigen retrieval with citrate buffer pH 6, HRP-staining.