

## Product datasheet for **TA326315**

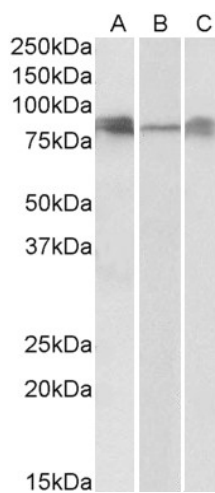
### DLL4 Goat Polyclonal Antibody

#### Product data:

Product Type:	Primary Antibodies
Applications:	WB
Reactivity:	Human, Mouse, Rat
Host:	Goat
Clonality:	Polyclonal
Immunogen:	Peptide with sequence KNTNQKKELEVDC, from the internal region of the protein sequence according to NP_061947.1.
Formulation:	Supplied at 0.5 mg/ml in Tris saline, 0.02% sodium azide, pH7.3 with 0.5% bovine serum albumin.
Concentration:	lot specific
Purification:	Purified from goat serum by ammonium sulphate precipitation followed by antigen affinity chromatography using the immunizing peptide.
Conjugation:	Unconjugated
Storage:	Store at -20°C as received.
Stability:	Stable for 12 months from date of receipt.
Predicted Protein Size:	74.6 kDa
Gene Name:	delta like canonical Notch ligand 4
Database Link:	<a href="#">NP_061947</a> <a href="#">Entrez Gene 54485 Mouse</a> <a href="#">Entrez Gene 311332 Rat</a> <a href="#">Entrez Gene 54567 Human</a> <a href="#">Q9NR61</a>
Synonyms:	hdelta2
Protein Families:	Cancer stem cells, Druggable Genome, ES Cell Differentiation/IPS, Stem cell relevant signaling - DSL/Notch pathway, Transmembrane
Protein Pathways:	Notch signaling pathway



[View online »](#)

**Product images:**

TA326315 (0.3ug/ml) staining of Human (A), Mouse (B) and Rat (C) Lung lysates (35ug protein in RIPA buffer). Primary incubation was 1 hour. Detected by chemiluminescence