

Product datasheet for **TA326308**

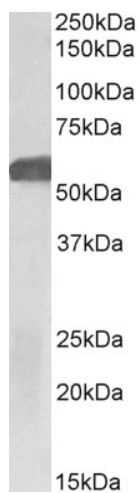
GLP1R Goat Polyclonal Antibody

Product data:

Product Type:	Primary Antibodies
Applications:	WB
Reactivity:	Human (Expected from sequence similarity: Mouse, Rat, Dog, Pig, Cow)
Host:	Goat
Clonality:	Polyclonal
Immunogen:	Peptide with sequence C-QHQWDGLLSYQD, from the internal region of the protein sequence according to NP_002053.3.
Formulation:	Supplied at 0.5 mg/ml in Tris saline, 0.02% sodium azide, pH7.3 with 0.5% bovine serum albumin.
Concentration:	lot specific
Purification:	Purified from goat serum by ammonium sulphate precipitation followed by antigen affinity chromatography using the immunizing peptide.
Conjugation:	Unconjugated
Storage:	Store at -20°C as received.
Stability:	Stable for 12 months from date of receipt.
Predicted Protein Size:	53.0 kDa
Gene Name:	glucagon like peptide 1 receptor
Database Link:	NP_002053 Entrez Gene 14652 Mouse Entrez Gene 25051 Rat Entrez Gene 481778 Dog Entrez Gene 2740 Human P43220
Synonyms:	MGC138331
Protein Families:	Druggable Genome, ES Cell Differentiation/IPS, GPCR, Transmembrane
Protein Pathways:	Neuroactive ligand-receptor interaction



[View online »](#)

Product images:

TA326308 (1ug/ml) staining of Human Hippocampus lysate (35ug protein in RIPA buffer). Detected by chemiluminescence.