

Product datasheet for **TA326307**

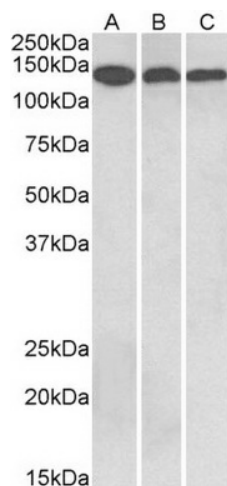
Contactin 1 (CNTN1) Goat Polyclonal Antibody

Product data:

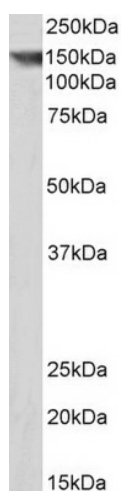
Product Type:	Primary Antibodies
Applications:	WB
Recommended Dilution:	WB: 0.3-1 µg/ml.
Reactivity:	Human, Mouse, Rat, Pig
Host:	Goat
Clonality:	Polyclonal
Immunogen:	Peptide with sequence C-ENIRGKDKHQAR, from the internal region of the protein sequence according to NP_001834.2; NP_778203.1; NP_001242992.1.
Formulation:	Supplied at 0.5 mg/ml in Tris saline, 0.02% sodium azide, pH7.3 with 0.5% bovine serum albumin.
Concentration:	lot specific
Purification:	Purified from goat serum by ammonium sulphate precipitation followed by antigen affinity chromatography using the immunizing peptide.
Conjugation:	Unconjugated
Storage:	Store at -20°C as received.
Stability:	Stable for 12 months from date of receipt.
Predicted Protein Size:	113 kDa
Gene Name:	contactin 1
Database Link:	NP_001834 Entrez Gene 12805 Mouse Entrez Gene 117258 Rat Entrez Gene 1272 Human Q12860
Synonyms:	F3; GP135; MYPCN
Protein Pathways:	Cell adhesion molecules (CAMs)



[View online »](#)

Product images:


TA326307 (0.3 ug/ml) staining of Human Cerebellum (A), Mouse Brain (B) and Rat Brain (C) lysates (35 ug protein in RIPA buffer). Primary incubation was 1 hour. Detected by chemiluminescence.



TA326307 (0.3 ug/ml) staining of Pig Brain lysate (35 ug protein in RIPA buffer). Primary incubation was 1 hour. Detected by chemiluminescence.