

Product datasheet for **TA326303**

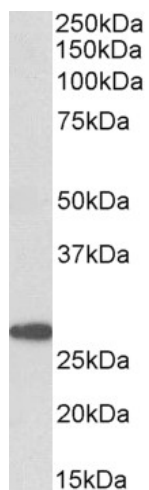
Prostaglandin D Synthase (PTGDS) Goat Polyclonal Antibody

Product data:

Product Type:	Primary Antibodies
Applications:	IHC, WB
Recommended Dilution:	ELISA:1:128000.WB:0.3-1µg/ml.IHC:5µg/ml
Reactivity:	Human
Host:	Goat
Clonality:	Polyclonal
Immunogen:	Peptide with sequence C-QVSVQPNFQQDK, from the internal region of the protein sequence according to NP_000945.3.
Formulation:	Supplied at 0.5 mg/ml in Tris saline, 0.02% sodium azide, pH7.3 with 0.5% bovine serum albumin.
Concentration:	lot specific
Purification:	Purified from goat serum by ammonium sulphate precipitation followed by antigen affinity chromatography using the immunizing peptide.
Conjugation:	Unconjugated
Storage:	Store at -20°C as received.
Stability:	Stable for 12 months from date of receipt.
Predicted Protein Size:	21.0 kDa
Gene Name:	prostaglandin D2 synthase
Database Link:	NP_000945 Entrez Gene 5730 Human P41222
Synonyms:	L-PGDS; LPGDS; PDS; PGD2; PGDS; PGDS2
Protein Pathways:	Arachidonic acid metabolism, Metabolic pathways



[View online »](#)

Product images:

TA326303 (0.3ug/ml) staining of Human Cerebellum lysate (35ug protein in RIPA buffer). Primary incubation was 1 hour. Detected by chemiluminescence.