

## Product datasheet for **TA326291**

### Apolipoprotein E (APOE) Rabbit Polyclonal Antibody

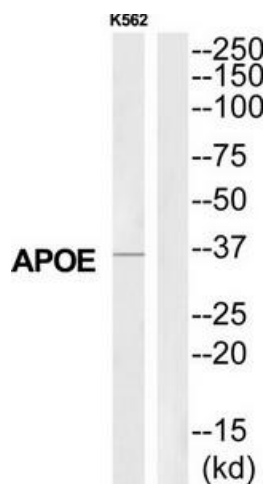
#### Product data:

Product Type:	Primary Antibodies
Applications:	WB
Recommended Dilution:	WB: 1:500~1:3000 ELISA: 1:10000
Reactivity:	Human, Mouse, Rat
Host:	Rabbit
Isotype:	IgG
Clonality:	Polyclonal
Immunogen:	The antiserum was produced against synthesized peptide derived from C-terminal of human APOE.
Formulation:	Phosphate buffered saline (without Mg <sup>2+</sup> and Ca <sup>2+</sup> ), pH 7.4, 150mM NaCl, 0.02% sodium azide and 50% glycerol.
Concentration:	lot specific
Purification:	The antibody was affinity-purified from rabbit antiserum by affinity-chromatography using epitope-specific immunogen.
Conjugation:	Unconjugated
Storage:	Store at -20°C as received.
Stability:	Stable for 12 months from date of receipt.
Gene Name:	apolipoprotein E
Database Link:	<a href="#">NP_000032</a> <a href="#">Entrez Gene 11816 MouseEntrez Gene 25728 RatEntrez Gene 348 Human P02649</a>
Synonyms:	AD2; APO-E; LDLCQ5; LPG
Protein Families:	Adult stem cells, Druggable Genome, Secreted Protein, Stem cell - Pluripotency
Protein Pathways:	Alzheimer's disease



[View online »](#)

## Product images:



Western blot analysis of extracts from K562 cells, using APOE antibody. The lane on the right is treated with the synthesized peptide.