

Product datasheet for **TA326290**

CARD11 Rabbit Polyclonal Antibody

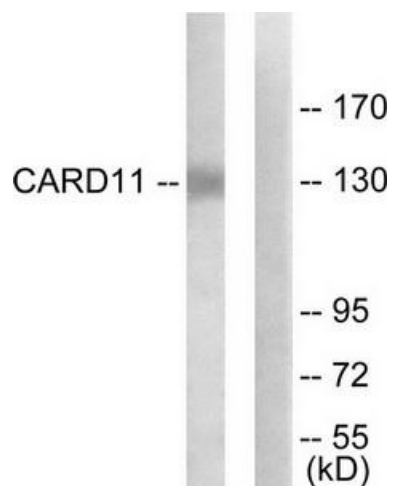
Product data:

Product Type:	Primary Antibodies
Applications:	WB
Recommended Dilution:	WB: 1:500~1:3000 ELISA: 1:40000
Reactivity:	Human, Mouse
Host:	Rabbit
Isotype:	IgG
Clonality:	Polyclonal
Immunogen:	The antiserum was produced against synthesized peptide derived from internal of human CARD11.
Formulation:	Phosphate buffered saline (without Mg ²⁺ and Ca ²⁺), pH 7.4, 150mM NaCl, 0.02% sodium azide and 50% glycerol.
Concentration:	lot specific
Purification:	The antibody was affinity-purified from rabbit antiserum by affinity-chromatography using epitope-specific immunogen.
Conjugation:	Unconjugated
Storage:	Store at -20°C as received.
Stability:	Stable for 12 months from date of receipt.
Gene Name:	caspase recruitment domain family member 11
Database Link:	NP_115791 Entrez Gene 108723 Mouse Entrez Gene 84433 Human Q9BXL7
Synonyms:	BENTA; BIMP3; CARMA1; IMD11; PPBL
Protein Families:	Druggable Genome
Protein Pathways:	B cell receptor signaling pathway, T cell receptor signaling pathway



[View online »](#)

Product images:



Western blot analysis of extracts from COLO205 cells, using CARD11 antibody. The lane on the right is treated with the synthesized peptide.