

## Product datasheet for **TA326289**

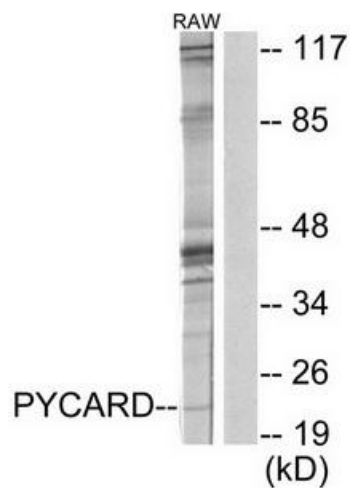
### TMS1 (PYCARD) Rabbit Polyclonal Antibody

#### Product data:

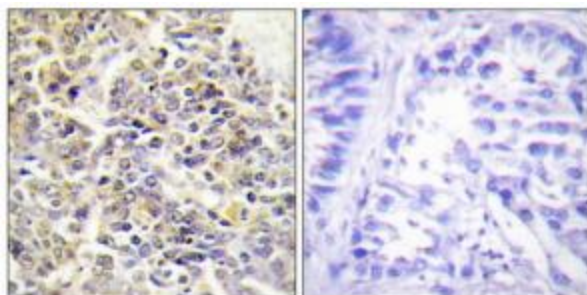
Product Type:	Primary Antibodies
Applications:	IHC, WB
Recommended Dilution:	WB: 1:500~1:3000 IHC: 1:50~1:100 ELISA: 1:40000
Reactivity:	Human, Mouse, Rat
Host:	Rabbit
Isotype:	IgG
Clonality:	Polyclonal
Immunogen:	The antiserum was produced against synthesized peptide derived from internal of human ASC.
Formulation:	Phosphate buffered saline (without Mg <sup>2+</sup> and Ca <sup>2+</sup> ), pH 7.4, 150mM NaCl, 0.02% sodium azide and 50% glycerol.
Concentration:	lot specific
Purification:	The antibody was affinity-purified from rabbit antiserum by affinity-chromatography using epitope-specific immunogen.
Conjugation:	Unconjugated
Storage:	Store at -20°C as received.
Stability:	Stable for 12 months from date of receipt.
Gene Name:	PYD and CARD domain containing
Database Link:	<a href="#">NP_037390</a> <a href="#">Entrez Gene 66824 MouseEntrez Gene 282817 RatEntrez Gene 29108 Human Q9ULZ3</a>
Synonyms:	ASC; CARD5; TMS; TMS-1; TMS1
Protein Families:	Druggable Genome
Protein Pathways:	Cytosolic DNA-sensing pathway, NOD-like receptor signaling pathway



[View online »](#)

**Product images:**

Western blot analysis of extracts from RAW264.7 cells, using ASC antibody. The lane on the right is treated with the synthesized peptide.



Immunohistochemistry analysis of paraffin-embedded human lung carcinoma tissue using ASC antibody. The picture on the right is treated with the synthesized peptide.