

Product datasheet for **TA326286**

SHB Rabbit Polyclonal Antibody

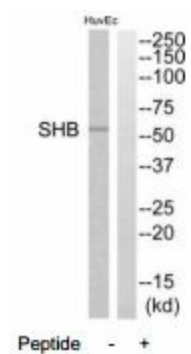
Product data:

Product Type:	Primary Antibodies
Applications:	WB
Recommended Dilution:	WB: 1:500~1:3000 ELISA: 1:5000
Reactivity:	Human, Mouse
Host:	Rabbit
Isotype:	IgG
Clonality:	Polyclonal
Immunogen:	The antiserum was produced against synthesized peptide derived from C-terminal of human SHB.
Formulation:	Phosphate buffered saline (without Mg ²⁺ and Ca ²⁺), pH 7.4, 150mM NaCl, 0.02% sodium azide and 50% glycerol.
Concentration:	lot specific
Purification:	The antibody was affinity-purified from rabbit antiserum by affinity-chromatography using epitope-specific immunogen.
Conjugation:	Unconjugated
Storage:	Store at -20°C as received.
Stability:	Stable for 12 months from date of receipt.
Gene Name:	SH2 domain containing adaptor protein B
Database Link:	NP_003019 Entrez Gene 230126 Mouse Entrez Gene 6461 Human Q15464
Synonyms:	bA3J10.2
Protein Families:	ES Cell Differentiation/IPS



[View online »](#)

Product images:



Western blot analysis of extracts from HuvEc cells, using SHB antibody.