

Product datasheet for **TA326283**

SART1 Rabbit Polyclonal Antibody

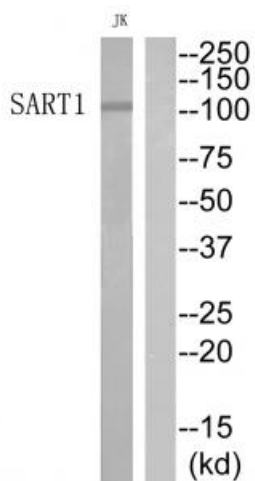
Product data:

Product Type:	Primary Antibodies
Applications:	WB
Recommended Dilution:	WB: 1:500~1:1000 ELISA: 1:10000
Reactivity:	Human, Mouse, Rat
Host:	Rabbit
Isotype:	IgG
Clonality:	Polyclonal
Immunogen:	The antiserum was produced against synthesized peptide derived from Internal of human SART1.
Formulation:	Phosphate buffered saline (without Mg ²⁺ and Ca ²⁺), pH 7.4, 150mM NaCl, 0.02% sodium azide and 50% glycerol.
Concentration:	lot specific
Purification:	The antibody was affinity-purified from rabbit antiserum by affinity-chromatography using epitope-specific immunogen.
Conjugation:	Unconjugated
Storage:	Store at -20°C as received.
Stability:	Stable for 12 months from date of receipt.
Gene Name:	squamous cell carcinoma antigen recognized by T-cells 1
Database Link:	NP_005137 Entrez Gene 20227 MouseEntrez Gene 29678 RatEntrez Gene 9092 Human O43290
Synonyms:	Ara1; HOMS1; SART1259; SNRNP110; Snu66
Protein Pathways:	Spliceosome



[View online »](#)

Product images:



Western blot analysis of extracts from JurKat cells, using SART1 antibody. The lane on the right is treated with the synthesized peptide.