

Product datasheet for **TA326278**

Amphiphysin (AMPH) Rabbit Polyclonal Antibody

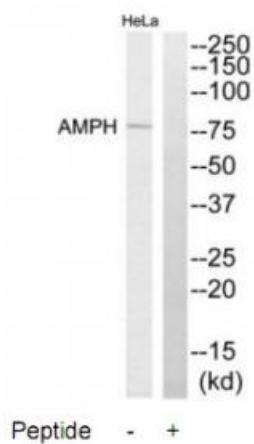
Product data:

Product Type:	Primary Antibodies
Applications:	WB
Recommended Dilution:	WB: 1:500~1:3000 ELISA: 1:20000
Reactivity:	Human, Mouse, Rat
Host:	Rabbit
Isotype:	IgG
Clonality:	Polyclonal
Immunogen:	The antiserum was produced against synthesized peptide derived from internal of human AMPH.
Formulation:	Phosphate buffered saline (without Mg ²⁺ and Ca ²⁺), pH 7.4, 150mM NaCl, 0.02% sodium azide and 50% glycerol.
Concentration:	lot specific
Purification:	The antibody was affinity-purified from rabbit antiserum by affinity-chromatography using epitope-specific immunogen.
Conjugation:	Unconjugated
Storage:	Store at -20°C as received.
Stability:	Stable for 12 months from date of receipt.
Gene Name:	amphiphysin
Database Link:	NP_001626 Entrez Gene 60668 Rat Entrez Gene 218038 Mouse Entrez Gene 273 Human P49418
Synonyms:	AMPH1
Protein Families:	Secreted Protein
Protein Pathways:	Fc gamma R-mediated phagocytosis



[View online »](#)

Product images:



Western blot analysis of extracts from HeLa cells, using AMPH antibody. The lane on the right is treated with the synthesized peptide.