

Product datasheet for **TA326277**

AKR1A1 Rabbit Polyclonal Antibody

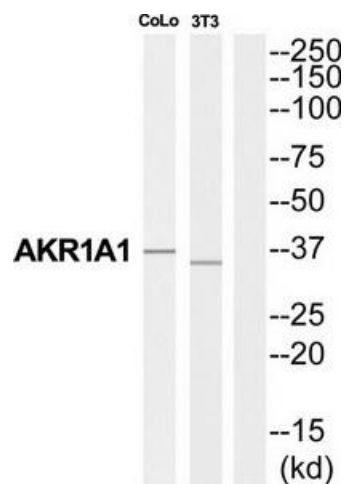
Product data:

Product Type:	Primary Antibodies
Applications:	WB
Recommended Dilution:	WB: 1:500~1:3000 ELISA: 1:40000
Reactivity:	Human, Mouse, Rat
Host:	Rabbit
Isotype:	IgG
Clonality:	Polyclonal
Immunogen:	The antiserum was produced against synthesized peptide derived from C-terminal of human AKR1A1.
Formulation:	Phosphate buffered saline (without Mg ²⁺ and Ca ²⁺), pH 7.4, 150mM NaCl, 0.02% sodium azide and 50% glycerol.
Concentration:	lot specific
Purification:	The antibody was affinity-purified from rabbit antiserum by affinity-chromatography using epitope-specific immunogen.
Conjugation:	Unconjugated
Storage:	Store at -20°C as received.
Stability:	Stable for 12 months from date of receipt.
Gene Name:	aldo-keto reductase family 1, member A1 (aldehyde reductase)
Database Link:	NP_006057 Entrez Gene 58810 Mouse Entrez Gene 78959 Rat Entrez Gene 10327 Human P14550
Synonyms:	ALDR1; ALR; ARM; DD3; HEL-S-6
Protein Families:	Druggable Genome
Protein Pathways:	Glycerolipid metabolism, Glycolysis / Gluconeogenesis, Metabolic pathways



[View online »](#)

Product images:



Western blot analysis of extracts from COLO205 cells and NIH-3T3 cells, using AKR1A1 antibody. The lane on the right is treated with the synthesized peptide.