

Product datasheet for **TA326276**

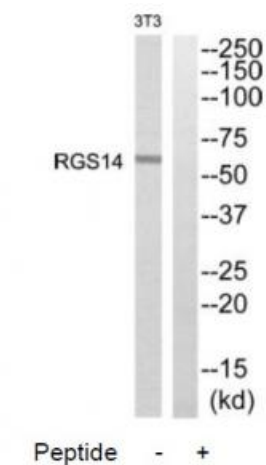
RGS14 Rabbit Polyclonal Antibody

Product data:

Product Type:	Primary Antibodies
Applications:	WB
Recommended Dilution:	WB: 1:500~1:3000 ELISA: 1:20000
Reactivity:	Human, Mouse, Rat
Host:	Rabbit
Isotype:	IgG
Clonality:	Polyclonal
Immunogen:	The antiserum was produced against synthesized peptide derived from internal of human RGS14.
Formulation:	Phosphate buffered saline (without Mg ²⁺ and Ca ²⁺), pH 7.4, 150mM NaCl, 0.02% sodium azide and 50% glycerol.
Concentration:	lot specific
Purification:	The antibody was affinity-purified from rabbit antiserum by affinity-chromatography using epitope-specific immunogen.
Conjugation:	Unconjugated
Storage:	Store at -20°C as received.
Stability:	Stable for 12 months from date of receipt.
Gene Name:	regulator of G-protein signaling 14
Database Link:	NP_006471 Entrez Gene 51791 Mouse Entrez Gene 114705 Rat Entrez Gene 10636 Human O43566
Synonyms:	regulator of G-protein signaling 14; regulator of G-protein signalling 14
Protein Families:	Druggable Genome



[View online »](#)

Product images:


Western blot analysis of extracts from NIH/3T3 cells, using RGS14 antibody. The lane on the right is treated with the synthesized peptide.