

## Product datasheet for **TA326270**

### Mannose Receptor (MRC1) Rabbit Polyclonal Antibody

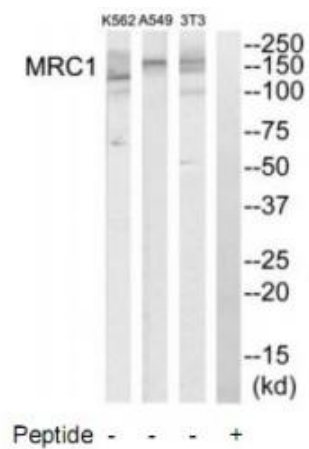
#### Product data:

Product Type:	Primary Antibodies
Applications:	WB
Recommended Dilution:	WB: 1:500~1:3000 ELISA: 1:20000
Reactivity:	Human, Mouse, Rat
Host:	Rabbit
Isotype:	IgG
Clonality:	Polyclonal
Immunogen:	The antiserum was produced against synthesized peptide derived from internal of human MRC1.
Formulation:	Phosphate buffered saline (without Mg <sup>2+</sup> and Ca <sup>2+</sup> ), pH 7.4, 150mM NaCl, 0.02% sodium azide and 50% glycerol.
Concentration:	lot specific
Purification:	The antibody was affinity-purified from rabbit antiserum by affinity-chromatography using epitope-specific immunogen.
Conjugation:	Unconjugated
Storage:	Store at -20°C as received.
Stability:	Stable for 12 months from date of receipt.
Gene Name:	mannose receptor, C type 1
Database Link:	<a href="#">NP_002429</a> <a href="#">Entrez Gene 17533 MouseEntrez Gene 291327 RatEntrez Gene 4360 Human P22897</a>
Synonyms:	bA541119.1; CD206; CLEC13D; CLEC13DL; MMR; MRC1L1
Protein Families:	Druggable Genome, Transmembrane



[View online »](#)

## Product images:



Western blot analysis of extracts from K562 cells, A549 cells and NIH-3T3 cells, using MRC1 antibody. The lane on the right is treated with the synthesized peptide.