

Product datasheet for **TA326269**

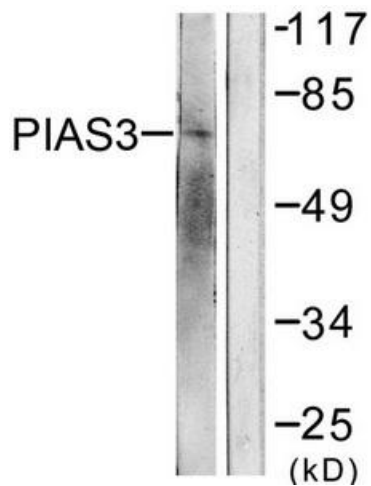
PIAS3 Rabbit Polyclonal Antibody

Product data:

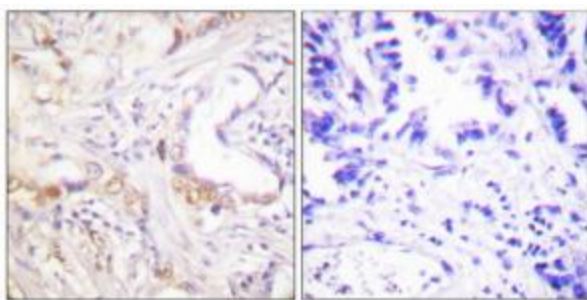
Product Type:	Primary Antibodies
Applications:	IHC, WB
Recommended Dilution:	WB: 1:500~1:3000 IHC: 1:50~1:100 ELISA: 1:10000
Reactivity:	Human, Mouse, Rat
Host:	Rabbit
Isotype:	IgG
Clonality:	Polyclonal
Immunogen:	The antiserum was produced against synthesized peptide derived from Internal of human PIAS3.
Formulation:	Phosphate buffered saline (without Mg ²⁺ and Ca ²⁺), pH 7.4, 150mM NaCl, 0.02% sodium azide and 50% glycerol.
Concentration:	lot specific
Purification:	The antibody was affinity-purified from rabbit antiserum by affinity-chromatography using epitope-specific immunogen.
Conjugation:	Unconjugated
Storage:	Store at -20°C as received.
Stability:	Stable for 12 months from date of receipt.
Gene Name:	protein inhibitor of activated STAT 3
Database Link:	NP_006090 Entrez Gene 83614 Rat Entrez Gene 229615 Mouse Entrez Gene 10401 Human Q9Y6X2
Synonyms:	ZMIZ5
Protein Families:	Transcription Factors
Protein Pathways:	Jak-STAT signaling pathway, Pathways in cancer, Small cell lung cancer, Ubiquitin mediated proteolysis



[View online »](#)

Product images:

Western blot analysis of extracts from 293 cells, treated with UV (5mins), using PIAS3 antibody. The lane on the right is treated with the synthesized peptide.



Immunohistochemistry analysis of paraffin-embedded human lung carcinoma tissue using PIAS3 antibody. The picture on the right is treated with the synthesized peptide.