

## Product datasheet for **TA326268**

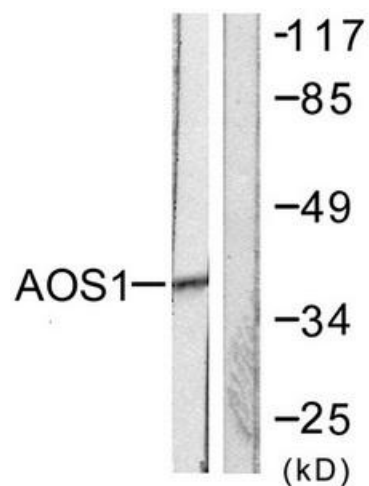
### SAE1 Rabbit Polyclonal Antibody

#### Product data:

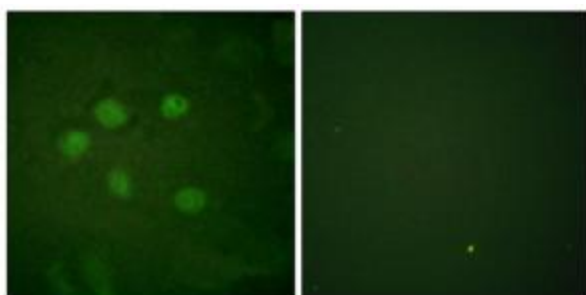
Product Type:	Primary Antibodies
Applications:	IF, WB
Recommended Dilution:	WB: 1:500~1:3000 IF: 1:100~1:500 ELISA: 1:20000
Reactivity:	Human, Mouse, Rat
Host:	Rabbit
Isotype:	IgG
Clonality:	Polyclonal
Immunogen:	The antiserum was produced against synthesized peptide derived from Internal of human AOS1.
Formulation:	Phosphate buffered saline (without Mg <sup>2+</sup> and Ca <sup>2+</sup> ), pH 7.4, 150mM NaCl, 0.02% sodium azide and 50% glycerol.
Concentration:	lot specific
Purification:	The antibody was affinity-purified from rabbit antiserum by affinity-chromatography using epitope-specific immunogen.
Conjugation:	Unconjugated
Storage:	Store at -20°C as received.
Stability:	Stable for 12 months from date of receipt.
Gene Name:	SUMO1 activating enzyme subunit 1
Database Link:	<a href="#">NP_005491</a> <a href="#">Entrez Gene 56459 MouseEntrez Gene 308384 RatEntrez Gene 10055 Human Q9UBE0</a>
Synonyms:	AOS1; HSPC140; SUA1; UBLE1A
Protein Pathways:	Ubiquitin mediated proteolysis



[View online »](#)

**Product images:**

Western blot analysis of extracts from 293 cells, using AOS1 antibody. The lane on the right is treated with the synthesized peptide.



Immunofluorescence analysis of HuvEc cells, using AOS1 antibody. The picture on the right is treated with the synthesized peptide.