

Product datasheet for **TA326267**

TIMP1 Rabbit Polyclonal Antibody

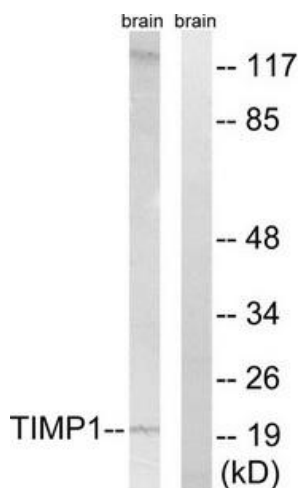
Product data:

| | |
|-----------------------|--|
| Product Type: | Primary Antibodies |
| Applications: | WB |
| Recommended Dilution: | WB: 1:500~1:3000 ELISA: 1:10000 |
| Reactivity: | Human, Mouse, Rat |
| Host: | Rabbit |
| Isotype: | IgG |
| Clonality: | Polyclonal |
| Immunogen: | The antiserum was produced against synthesized peptide derived from internal of human TIMP1. |
| Formulation: | Phosphate buffered saline (without Mg ²⁺ and Ca ²⁺), pH 7.4, 150mM NaCl, 0.02% sodium azide and 50% glycerol. |
| Concentration: | lot specific |
| Purification: | The antibody was affinity-purified from rabbit antiserum by affinity-chromatography using epitope-specific immunogen. |
| Conjugation: | Unconjugated |
| Storage: | Store at -20°C as received. |
| Stability: | Stable for 12 months from date of receipt. |
| Gene Name: | TIMP metalloproteinase inhibitor 1 |
| Database Link: | NP_003245 Entrez Gene 21857 Mouse Entrez Gene 116510 Rat Entrez Gene 7076 Human P01033 |
| Synonyms: | CLGI; EPA; EPO; HCl; TIMP; TIMP-1 |
| Protein Families: | Druggable Genome, Secreted Protein |

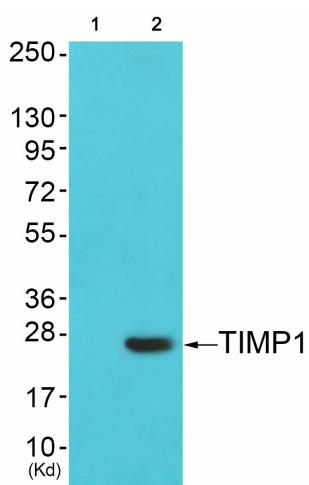


[View online »](#)

Product images:



Western blot analysis of extracts from 293 cells, using TIMP1 antibody. The lane on the right is treated with the synthesized peptide.



Western blot analysis of extracts from cos-7 cells (Lane 2), using TIMP1 Antibody. The lane on the left is treated with synthesized peptide.