

Product datasheet for **TA326266**

DUSP16 Rabbit Polyclonal Antibody

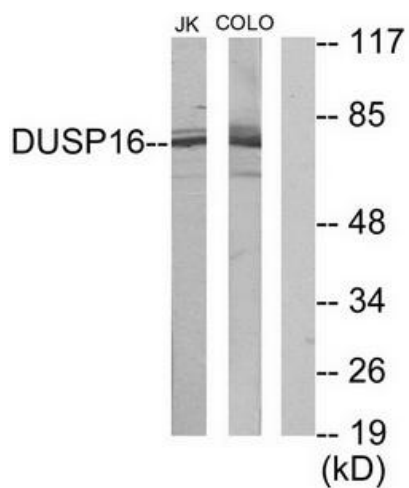
Product data:

Product Type:	Primary Antibodies
Applications:	IF, WB
Recommended Dilution:	WB: 1:500~1:3000 IF: 1:100~1:500 ELISA: 1:10000
Reactivity:	Human, Mouse
Host:	Rabbit
Isotype:	IgG
Clonality:	Polyclonal
Immunogen:	The antiserum was produced against synthesized peptide derived from internal of human DUSP16.
Formulation:	Phosphate buffered saline (without Mg ²⁺ and Ca ²⁺), pH 7.4, 150mM NaCl, 0.02% sodium azide and 50% glycerol.
Concentration:	lot specific
Purification:	The antibody was affinity-purified from rabbit antiserum by affinity-chromatography using epitope-specific immunogen.
Conjugation:	Unconjugated
Storage:	Store at -20°C as received.
Stability:	Stable for 12 months from date of receipt.
Gene Name:	dual specificity phosphatase 16
Database Link:	NP_085143 Entrez Gene 70686 Mouse Entrez Gene 80824 Human Q9BY84
Synonyms:	MKP-7; MKP7
Protein Families:	Druggable Genome, Phosphatase
Protein Pathways:	MAPK signaling pathway

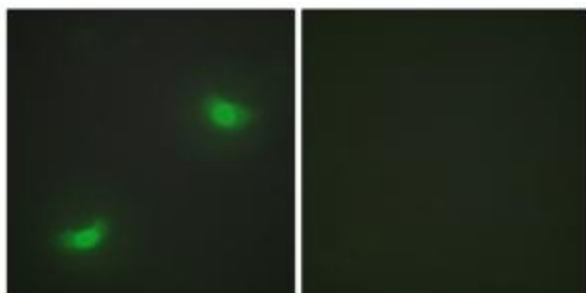


[View online »](#)

Product images:



Western blot analysis of extracts from Jurkat cells and COLO205 cells, using DUSP16 antibody. The lane on the right is treated with the synthesized peptide.



Immunofluorescence analysis of HepG2 cells, using DUSP16 antibody. The picture on the right is treated with the synthesized peptide.