

## Product datasheet for **TA326263**

### HP1 alpha (CBX5) Rabbit Polyclonal Antibody

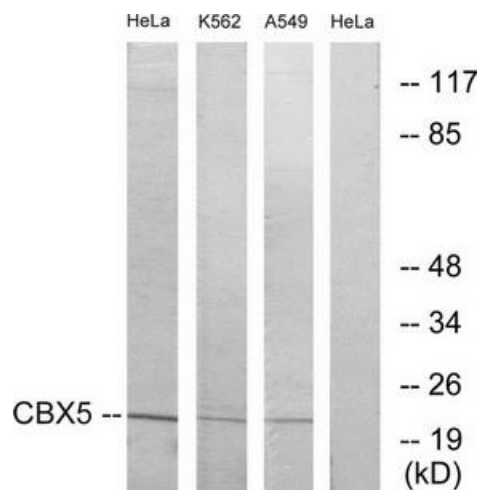
#### Product data:

Product Type:	Primary Antibodies
Applications:	WB
Recommended Dilution:	WB: 1:500~1:3000 ELISA: 1:20000
Reactivity:	Human, Mouse
Host:	Rabbit
Isotype:	IgG
Clonality:	Polyclonal
Immunogen:	The antiserum was produced against synthesized peptide derived from internal of human CBX5.
Formulation:	Phosphate buffered saline (without Mg <sup>2+</sup> and Ca <sup>2+</sup> ), pH 7.4, 150mM NaCl, 0.02% sodium azide and 50% glycerol.
Concentration:	lot specific
Purification:	The antibody was affinity-purified from rabbit antiserum by affinity-chromatography using epitope-specific immunogen.
Conjugation:	Unconjugated
Storage:	Store at -20°C as received.
Stability:	Stable for 12 months from date of receipt.
Gene Name:	chromobox 5
Database Link:	<a href="#">NP_036249</a> <a href="#">Entrez Gene 12419 Mouse</a> <a href="#">Entrez Gene 23468 Human</a> <a href="#">P45973</a>
Synonyms:	HEL25; HP1; HP1A



[View online »](#)

## Product images:



Western blot analysis of extracts from HUVEC cells, using CBX5 antibody. The lane on the right is treated with the synthesized peptide.