

## Product datasheet for **TA326261**

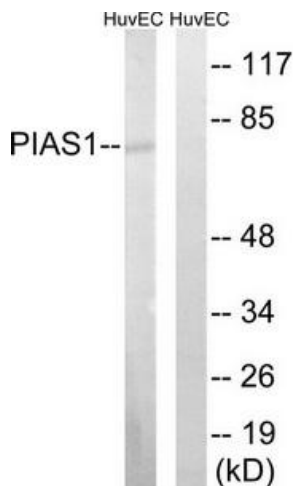
### PIAS1 Rabbit Polyclonal Antibody

#### Product data:

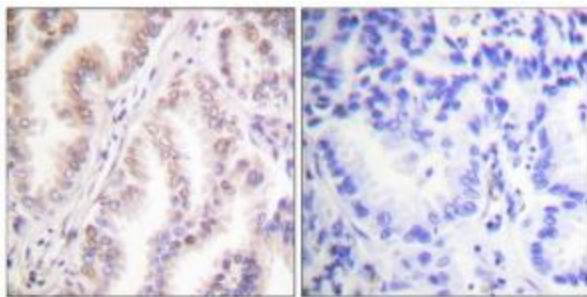
Product Type:	Primary Antibodies
Applications:	IHC, WB
Recommended Dilution:	WB: 1:500~1:3000 IHC: 1:50~1:100 ELISA: 1:10000
Reactivity:	Human, Mouse
Host:	Rabbit
Isotype:	IgG
Clonality:	Polyclonal
Immunogen:	The antiserum was produced against synthesized peptide derived from Internal of human PIAS1.
Formulation:	Phosphate buffered saline (without Mg <sup>2+</sup> and Ca <sup>2+</sup> ), pH 7.4, 150mM NaCl, 0.02% sodium azide and 50% glycerol.
Concentration:	lot specific
Purification:	The antibody was affinity-purified from rabbit antiserum by affinity-chromatography using epitope-specific immunogen.
Conjugation:	Unconjugated
Storage:	Store at -20°C as received.
Stability:	Stable for 12 months from date of receipt.
Gene Name:	protein inhibitor of activated STAT 1
Database Link:	<a href="#">NP_057250</a> <a href="#">Entrez Gene 56469 Mouse</a> <a href="#">Entrez Gene 8554 Human</a> <a href="#">O75925</a>
Synonyms:	DDXBP1; GBP; GU; RH-II; ZMIZ3
Protein Families:	Druggable Genome, Transcription Factors
Protein Pathways:	Jak-STAT signaling pathway, Pathways in cancer, Small cell lung cancer, Ubiquitin mediated proteolysis



[View online »](#)

**Product images:**

Western blot analysis of extracts from MDA-MB-435 cells, using PIAS1 antibody. The lane on the right is treated with the synthesized peptide.



Immunohistochemistry analysis of paraffin-embedded human lung carcinoma tissue using PIAS1 antibody. The picture on the right is treated with the synthesized peptide.