

Product datasheet for **TA326260**

MMP2 Rabbit Polyclonal Antibody

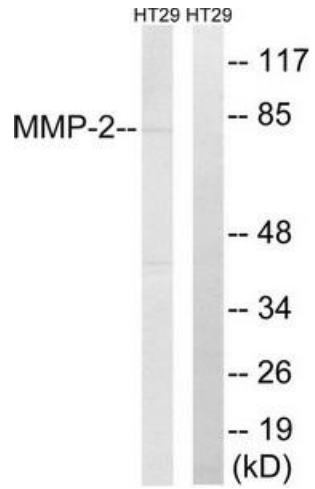
Product data:

Product Type:	Primary Antibodies
Applications:	WB
Recommended Dilution:	WB: 1:500~1:3000 ELISA: 1:20000
Reactivity:	Human, Mouse, Rat
Host:	Rabbit
Isotype:	IgG
Clonality:	Polyclonal
Immunogen:	The antiserum was produced against synthesized peptide derived from human MMP-2.
Formulation:	Phosphate buffered saline (without Mg ²⁺ and Ca ²⁺), pH 7.4, 150mM NaCl, 0.02% sodium azide and 50% glycerol.
Concentration:	lot specific
Purification:	The antibody was affinity-purified from rabbit antiserum by affinity-chromatography using epitope-specific immunogen.
Conjugation:	Unconjugated
Storage:	Store at -20°C as received.
Stability:	Stable for 12 months from date of receipt.
Gene Name:	matrix metalloproteinase 2
Database Link:	NP_004521 Entrez Gene 17390 Mouse Entrez Gene 81686 Rat Entrez Gene 4313 Human P08253
Synonyms:	CLG4; CLG4A; MMP-2; MMP-II; MONA; TBE-1
Protein Families:	Druggable Genome, Protease
Protein Pathways:	Bladder cancer, GnRH signaling pathway, Leukocyte transendothelial migration, Pathways in cancer

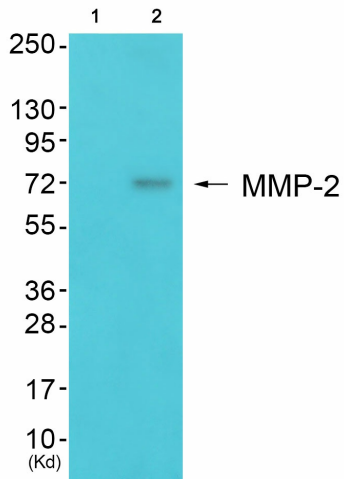


[View online »](#)

Product images:



Western blot analysis of extracts from HT-29 cells, using MMP-2 antibody (#TA326260). The lane on the right is treated with the synthesized peptide.



Western blot analysis of extracts from 3T3 cells (Lane 2), using MMP-2 Antibody. The lane on the left is treated with synthesized peptide.