

Product datasheet for **TA326256**

SNAP25 Rabbit Polyclonal Antibody

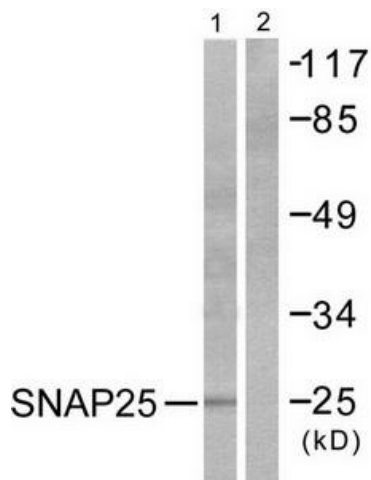
Product data:

Product Type:	Primary Antibodies
Applications:	IHC, WB
Recommended Dilution:	WB: 1:500~1:3000 IHC: 1:50~1:100ELISA: 1:20000
Reactivity:	Human, Mouse, Rat
Host:	Rabbit
Isotype:	IgG
Clonality:	Polyclonal
Immunogen:	The antiserum was produced against synthesized peptide derived from human SNAP25.
Formulation:	Phosphate buffered saline (without Mg ²⁺ and Ca ²⁺), pH 7.4, 150mM NaCl, 0.02% sodium azide and 50% glycerol.
Concentration:	lot specific
Purification:	The antibody was affinity-purified from rabbit antiserum by affinity-chromatography using epitope-specific immunogen.
Conjugation:	Unconjugated
Storage:	Store at -20°C as received.
Stability:	Stable for 12 months from date of receipt.
Gene Name:	synaptosome associated protein 25kDa
Database Link:	NP_570824 Entrez Gene 20614 Mouse Entrez Gene 25012 Rat Entrez Gene 6616 Human P60880
Synonyms:	bA416N4.2; dj1068F16.2; RIC-4; RIC4; SEC9; SNAP; SNAP-25
Protein Families:	Druggable Genome
Protein Pathways:	SNARE interactions in vesicular transport

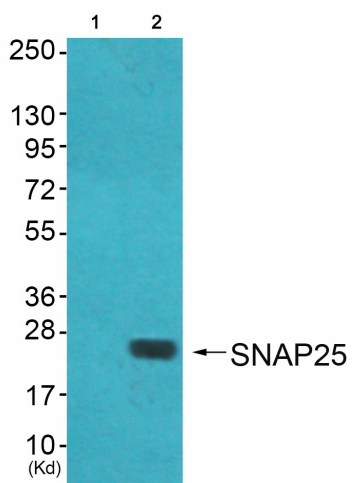


[View online »](#)

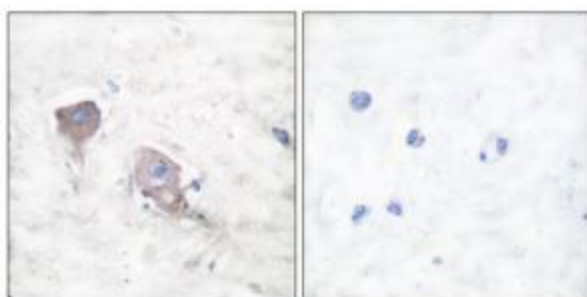
Product images:



Western blot analysis of extracts from RAW264.7 cells, treated with EGF (200ng/ml, 30mins), using SNAP25 antibody (#TA326256).The lane on the right is treated with the synthesized peptide.



Western blot analysis of extracts from A549 cells (Lane 2), cells (Lane 3) and cells (Lane 4), using SNAP25 Antibody. The lane on the left is treated with synthesized peptide.



Immunohistochemical analysis of paraffin-embedded human brain tissue using SNAP25 antibody (#TA326256).The picture on the right is treated with the synthesized peptide.