

## Product datasheet for **TA326255**

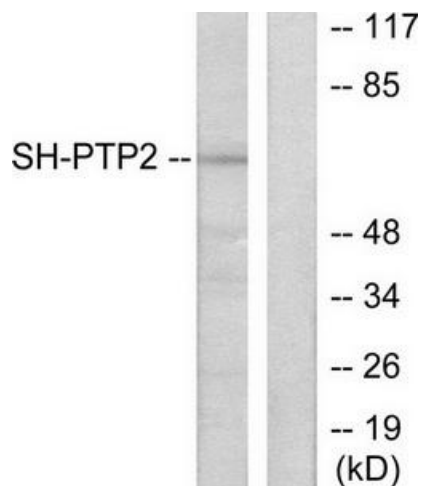
### **SHP2 (PTPN11) Rabbit Polyclonal Antibody**

#### **Product data:**

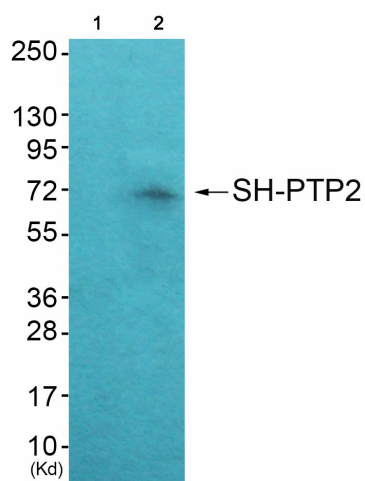
|                              |  |
|------------------------------|--|
| <b>Product Type:</b>         | Primary Antibodies   |
| <b>Applications:</b>         | IHC, WB  |
| <b>Recommended Dilution:</b> | WB: 1:500~1:3000 IHC: 1:50~1:100ELISA: 1:5000  |
| <b>Reactivity:</b>           | Human, Mouse, Rat  |
| <b>Host:</b>                 | Rabbit   |
| <b>Isotype:</b>              | IgG  |
| <b>Clonality:</b>            | Polyclonal   |
| <b>Immunogen:</b>            | The antiserum was produced against synthesized peptide derived from human SH-PTP2.   |
| <b>Formulation:</b>          | Phosphate buffered saline (without Mg <sup>2+</sup> and Ca <sup>2+</sup> ), pH 7.4, 150mM NaCl, 0.02% sodium azide and 50% glycerol.   |
| <b>Concentration:</b>        | lot specific   |
| <b>Purification:</b>         | The antibody was affinity-purified from rabbit antiserum by affinity-chromatography using epitope-specific immunogen.  |
| <b>Conjugation:</b>          | Unconjugated   |
| <b>Storage:</b>              | Store at -20°C as received.  |
| <b>Stability:</b>            | Stable for 12 months from date of receipt.   |
| <b>Gene Name:</b>            | protein tyrosine phosphatase, non-receptor type 11   |
| <b>Database Link:</b>        | <a href="#">NP_002825</a><br><a href="#">Entrez Gene 19247 Mouse</a> <a href="#">Entrez Gene 25622 Rat</a> <a href="#">Entrez Gene 5781 Human</a><br><a href="#">Q06124</a>  |
| <b>Synonyms:</b>             | BTP3; CFC; JMML; METCD5; NS1; PTP-1D; PTP2C; SH-PTP2; SH-PTP3; SHP2  |
| <b>Protein Families:</b>     | Druggable Genome, Phosphatase  |
| <b>Protein Pathways:</b>     | Adipocytokine signaling pathway, Chronic myeloid leukemia, Epithelial cell signaling in Helicobacter pylori infection, Jak-STAT signaling pathway, Leukocyte transendothelial migration, Natural killer cell mediated cytotoxicity, Neurotrophin signaling pathway, Renal cell carcinoma |



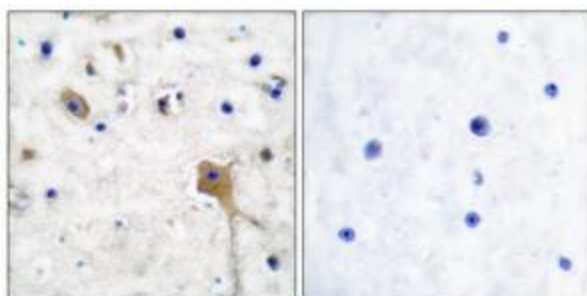
[View online »](#)

**Product images:**


Western blot analysis of extracts from COS7 cells, using SH-PTP2 antibody (#TA326255). The lane on the right is treated with the synthesized peptide.



Western blot analysis of extracts from JK cells (Lane 2), using SH-PTP2 Antibody. The lane on the left is treated with synthesized peptide.



Immunohistochemical analysis of paraffin-embedded human brain tissue using SH-PTP2 antibody (#TA326255). The picture on the right is treated with the synthesized peptide.