

## Product datasheet for **TA326252**

### PARP4 Rabbit Polyclonal Antibody

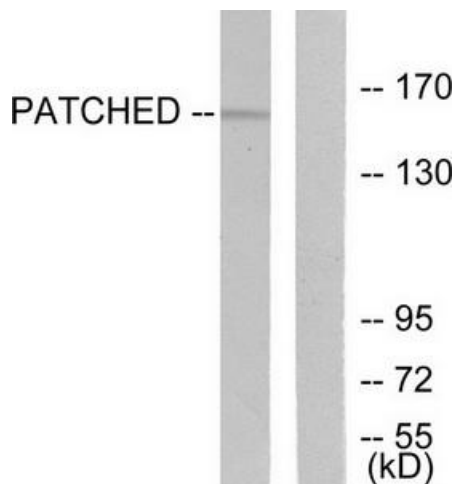
#### Product data:

Product Type:	Primary Antibodies
Applications:	IHC, WB
Recommended Dilution:	WB: 1:500~1:3000 IHC: 1:50~1:100ELISA: 1:10000
Reactivity:	Human, Mouse
Host:	Rabbit
Isotype:	IgG
Clonality:	Polyclonal
Immunogen:	The antiserum was produced against synthesized peptide derived from human Patched.
Formulation:	Phosphate buffered saline (without Mg <sup>2+</sup> and Ca <sup>2+</sup> ), pH 7.4, 150mM NaCl, 0.02% sodium azide and 50% glycerol.
Concentration:	lot specific
Purification:	The antibody was affinity-purified from rabbit antiserum by affinity-chromatography using epitope-specific immunogen.
Conjugation:	Unconjugated
Storage:	Store at -20°C as received.
Stability:	Stable for 12 months from date of receipt.
Gene Name:	poly(ADP-ribose) polymerase family member 4
Database Link:	<a href="#">NP_006428</a> <a href="#">Entrez Gene 328417 Mouse</a> <a href="#">Entrez Gene 143 Human</a> <a href="#">Q9UKK3</a>
Synonyms:	ADPRTL1; ARTD4; p193; PARP-4; PARPL; PH5P; VAULT3; VPARP; VWA5C
Protein Families:	Druggable Genome
Protein Pathways:	Base excision repair

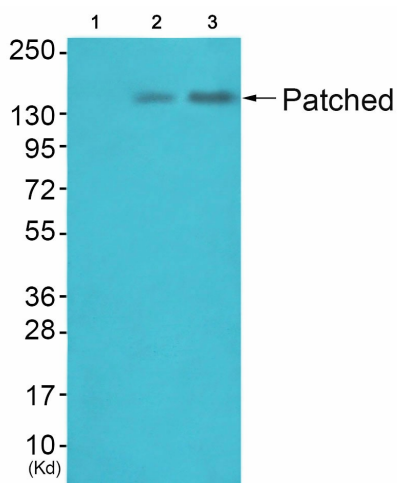


[View online »](#)

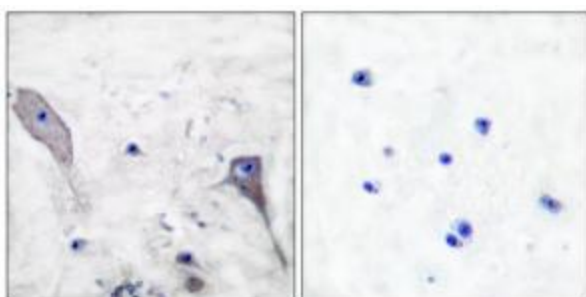
Product images:



Western blot analysis of extracts from mouse muscle cells, using Patched antibody (#TA326252). The lane on the right is treated with the synthesized peptide.



Western blot analysis of extracts from 3T3 cells (Lane 2) and HepG2 cells (Lane 3), using Patched Antibody. The lane on the left is treated with synthesized peptide.



Immunohistochemical analysis of paraffin-embedded human brain tissue using Patched antibody (#TA326252). The picture on the right is treated with the synthesized peptide.