

Product datasheet for **TA326251**

Parkin (PARK2) Rabbit Polyclonal Antibody

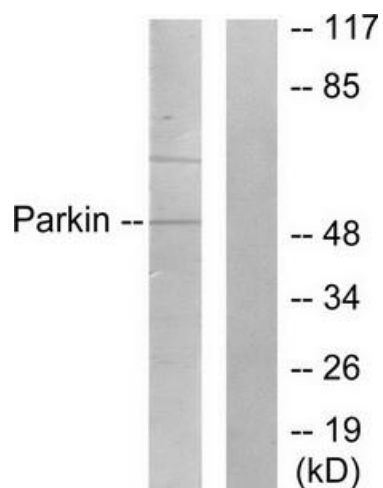
Product data:

Product Type:	Primary Antibodies
Applications:	IHC, WB
Recommended Dilution:	WB: 1:500~1:3000 IHC: 1:50~1:100ELISA: 1:5000
Reactivity:	Human, Mouse, Rat
Host:	Rabbit
Isotype:	IgG
Clonality:	Polyclonal
Immunogen:	The antiserum was produced against synthesized peptide derived from human Parkin antibody.
Formulation:	Phosphate buffered saline (without Mg ²⁺ and Ca ²⁺), pH 7.4, 150mM NaCl, 0.02% sodium azide and 50% glycerol.
Concentration:	lot specific
Purification:	The antibody was affinity-purified from rabbit antiserum by affinity-chromatography using epitope-specific immunogen.
Conjugation:	Unconjugated
Storage:	Store at -20°C as received.
Stability:	Stable for 12 months from date of receipt.
Gene Name:	parkin RBR E3 ubiquitin protein ligase
Database Link:	NP_054642 Entrez Gene 50873 MouseEntrez Gene 56816 RatEntrez Gene 5071 Human O60260
Synonyms:	AR-JP; LPRS2; PDJ; PRKN
Protein Pathways:	Parkinson's disease, Ubiquitin mediated proteolysis

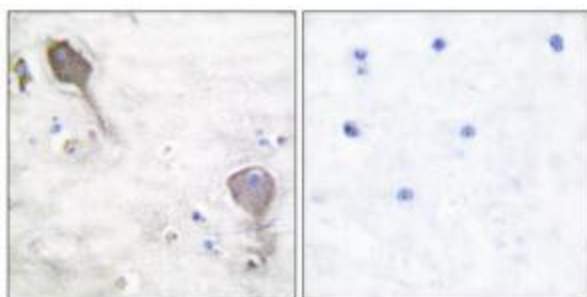


[View online »](#)

Product images:



Western blot analysis of extracts from Jukat cells, using Parkin antibody (#TA326251). The lane on the right is treated with the synthesized peptide.



Immunohistochemical analysis of paraffin-embedded human brain tissue using Parkin antibody (#TA326251). The picture on the right is treated with the synthesized peptide.