

## Product datasheet for **TA326250**

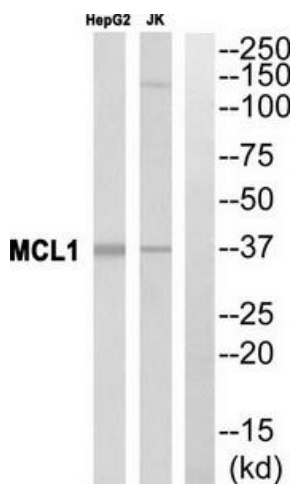
### MCL1 Rabbit Polyclonal Antibody

#### Product data:

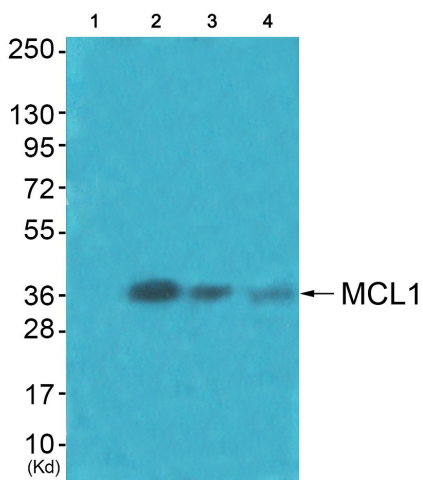
Product Type:	Primary Antibodies
Applications:	IHC, WB
Recommended Dilution:	WB: 1:500~1:3000 IHC: 1:50~1:100ELISA: 1:40000
Reactivity:	Human, Mouse, Rat
Host:	Rabbit
Isotype:	IgG
Clonality:	Polyclonal
Immunogen:	The antiserum was produced against synthesized peptide derived from human MCL1.
Formulation:	Phosphate buffered saline (without Mg <sup>2+</sup> and Ca <sup>2+</sup> ), pH 7.4, 150mM NaCl, 0.02% sodium azide and 50% glycerol.
Concentration:	lot specific
Purification:	The antibody was affinity-purified from rabbit antiserum by affinity-chromatography using epitope-specific immunogen.
Conjugation:	Unconjugated
Storage:	Store at -20°C as received.
Stability:	Stable for 12 months from date of receipt.
Gene Name:	myeloid cell leukemia 1
Database Link:	<a href="#">NP_068779</a> <a href="#">Entrez Gene 17210 Mouse</a> <a href="#">Entrez Gene 60430 Rat</a> <a href="#">Entrez Gene 4170 Human</a> <a href="#">Q07820</a>
Synonyms:	bcl2-L-3; BCL2L3; EAT; Mcl-1; mcl1; MCL1-ES; MCL1L; MCL1S; TM
Protein Families:	Druggable Genome, Transmembrane



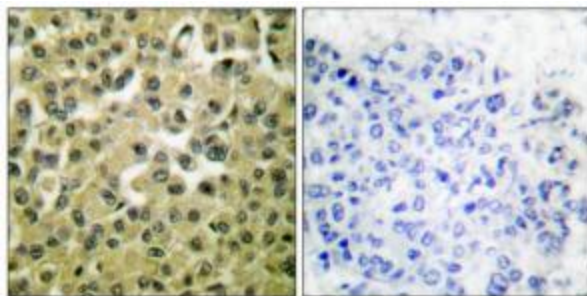
[View online »](#)

**Product images:**


Western blot analysis of extracts from HuvEc cells, using MCL1 antibody (#TA326250).The lane on the right is treated with the synthesized peptide.



Western blot analysis of extracts from HuvEc cells (Lane 2), JK cells (Lane 3) and cos-7 cells (Lane 4), using MCL1 Antibody. The lane on the left is treated with synthesized peptide.



Immunohistochemical analysis of paraffin-embedded human breast carcinoma tissue using MCL1 antibody (#TA326250).The picture on the right is treated with the synthesized peptide.