

Product datasheet for **TA326249**

NBPF1 Rabbit Polyclonal Antibody

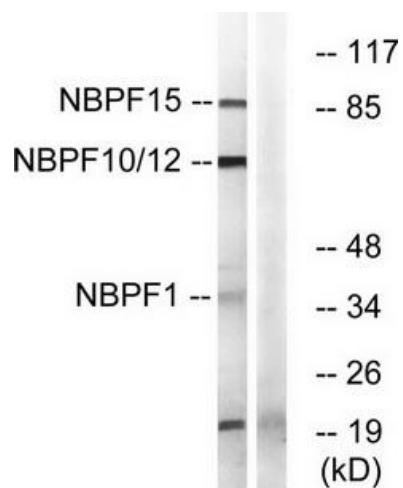
Product data:

Product Type:	Primary Antibodies
Applications:	WB
Recommended Dilution:	WB: 1:500~1:3000 ELISA: 1:40000
Reactivity:	Human
Host:	Rabbit
Isotype:	IgG
Clonality:	Polyclonal
Immunogen:	The antiserum was produced against synthesized peptide derived from internal of human NBPF1/9/10/12/14/15/16/20.
Formulation:	Phosphate buffered saline (without Mg ²⁺ and Ca ²⁺), pH 7.4, 150mM NaCl, 0.02% sodium azide and 50% glycerol.
Concentration:	lot specific
Purification:	The antibody was affinity-purified from rabbit antiserum by affinity-chromatography using epitope-specific immunogen.
Conjugation:	Unconjugated
Storage:	Store at -20°C as received.
Stability:	Stable for 12 months from date of receipt.
Gene Name:	neuroblastoma breakpoint family member 1
Database Link:	NP_060410 Entrez Gene 55672 Human Q3BBV0
Synonyms:	AB13; AB14; AB23; AD2; NBG; NBPF



[View online »](#)

Product images:



Western blot analysis of extracts from 293 cells, using NBPF1/9/10/12/14/15/16/20 antibody. The lane on the right is treated with the synthesized peptide.