

Product datasheet for **TA326247**

PDXDC1 Rabbit Polyclonal Antibody

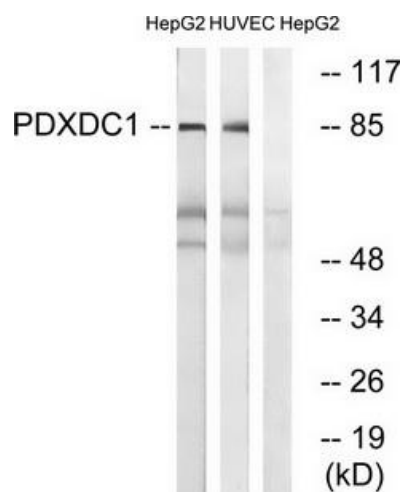
Product data:

Product Type:	Primary Antibodies
Applications:	WB
Recommended Dilution:	WB: 1:500~1:3000 ELISA: 1:10000
Reactivity:	Human, Mouse, Rat
Host:	Rabbit
Isotype:	IgG
Clonality:	Polyclonal
Immunogen:	The antiserum was produced against synthesized peptide derived from internal of human PDXDC1.
Formulation:	Phosphate buffered saline (without Mg ²⁺ and Ca ²⁺), pH 7.4, 150mM NaCl, 0.02% sodium azide and 50% glycerol.
Concentration:	lot specific
Purification:	The antibody was affinity-purified from rabbit antiserum by affinity-chromatography using epitope-specific immunogen.
Conjugation:	Unconjugated
Storage:	Store at -20°C as received.
Stability:	Stable for 12 months from date of receipt.
Gene Name:	pyridoxal-dependent decarboxylase domain containing 1
Database Link:	NP_055842 Entrez Gene 94184 MouseEntrez Gene 304721 RatEntrez Gene 23042 Human Q6P996
Synonyms:	LP8165



[View online »](#)

Product images:



Western blot analysis of extracts from HepG2 cells and HUVEC cells, using PDXDC1 antibody. The lane on the right is treated with the synthesized peptide.