

## Product datasheet for **TA326241**

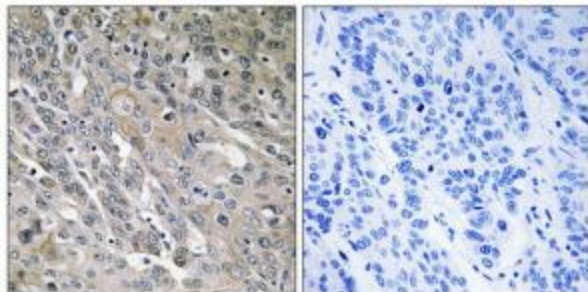
### ARHGEF9 Rabbit Polyclonal Antibody

#### Product data:

Product Type:	Primary Antibodies
Applications:	IHC
Recommended Dilution:	IHC: 1:50~1:100 ELISA: 1:40000
Reactivity:	Human, Mouse, Rat
Host:	Rabbit
Isotype:	IgG
Clonality:	Polyclonal
Immunogen:	The antiserum was produced against synthesized peptide derived from internal of human ARHGEF9.
Formulation:	Phosphate buffered saline (without Mg <sup>2+</sup> and Ca <sup>2+</sup> ), pH 7.4, 150mM NaCl, 0.02% sodium azide and 50% glycerol.
Concentration:	lot specific
Purification:	The antibody was affinity-purified from rabbit antiserum by affinity-chromatography using epitope-specific immunogen.
Conjugation:	Unconjugated
Storage:	Store at -20°C as received.
Stability:	Stable for 12 months from date of receipt.
Gene Name:	Cdc42 guanine nucleotide exchange factor 9
Database Link:	<a href="#">NP_056000</a> <a href="#">Entrez Gene 66013 Rat</a> <a href="#">Entrez Gene 236915 Mouse</a> <a href="#">Entrez Gene 23229 Human</a> <a href="#">O43307</a>
Synonyms:	COLLYBISTIN; EIEE8; HPEM-2; PEM-2; PEM2



[View online »](#)

**Product images:**

Immunohistochemistry analysis of paraffin-embedded human lung carcinoma tissue using ARHGEF9 antibody. The picture on the right is treated with the synthesized peptide.