

Product datasheet for **TA326231**

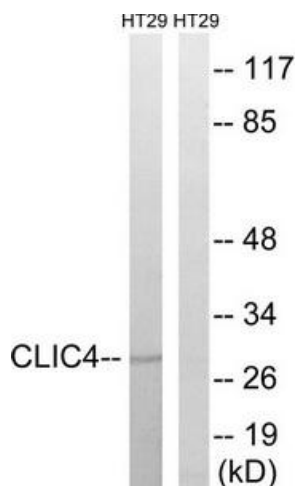
CLIC4 Rabbit Polyclonal Antibody

Product data:

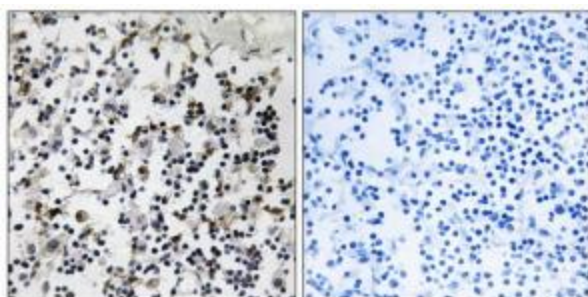
| | |
|-----------------------|--|
| Product Type: | Primary Antibodies |
| Applications: | IHC, WB |
| Recommended Dilution: | WB: 1:500~1:3000 IHC: 1:50~1:100 ELISA: 1:40000 |
| Reactivity: | Human, Mouse, Rat |
| Host: | Rabbit |
| Isotype: | IgG |
| Clonality: | Polyclonal |
| Immunogen: | The antiserum was produced against synthesized peptide derived from N-terminal of human CLIC4. |
| Formulation: | Phosphate buffered saline (without Mg ²⁺ and Ca ²⁺), pH 7.4, 150mM NaCl, 0.02% sodium azide and 50% glycerol. |
| Concentration: | lot specific |
| Purification: | The antibody was affinity-purified from rabbit antiserum by affinity-chromatography using epitope-specific immunogen. |
| Conjugation: | Unconjugated |
| Storage: | Store at -20°C as received. |
| Stability: | Stable for 12 months from date of receipt. |
| Gene Name: | chloride intracellular channel 4 |
| Database Link: | NP_039234 Entrez Gene 29876 MouseEntrez Gene 83718 RatEntrez Gene 25932 Human Q9Y696 |
| Synonyms: | CLIC4L; H1; huH1; MTCLIC; p64H1 |
| Protein Families: | Druggable Genome, Ion Channels: Other |



[View online »](#)

Product images:

Western blot analysis of extracts from HT-29 cells, using CLIC4 antibody. The lane on the right is treated with the synthesized peptide.



Immunohistochemistry analysis of paraffin-embedded human lymph node tissue using CLIC4 antibody. The picture on the right is treated with the synthesized peptide.