

Product datasheet for **TA326228**

ERCC1 Rabbit Polyclonal Antibody

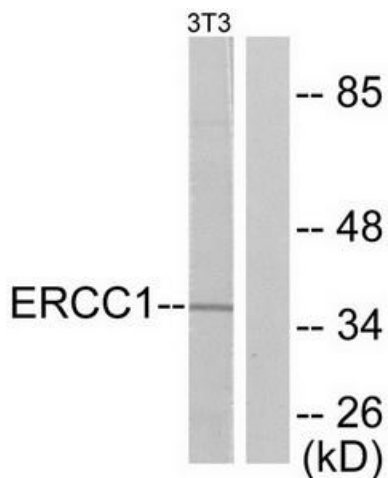
Product data:

Product Type:	Primary Antibodies
Applications:	IHC, WB
Recommended Dilution:	WB: 1:500~1:3000 IHC: 1:50~1:100ELISA: 1:5000
Reactivity:	Human, Mouse
Host:	Rabbit
Isotype:	IgG
Clonality:	Polyclonal
Immunogen:	The antiserum was produced against synthesized peptide derived from human ERCC1.
Formulation:	Phosphate buffered saline (without Mg ²⁺ and Ca ²⁺), pH 7.4, 150mM NaCl, 0.02% sodium azide and 50% glycerol.
Concentration:	lot specific
Purification:	The antibody was affinity-purified from rabbit antiserum by affinity-chromatography using epitope-specific immunogen.
Conjugation:	Unconjugated
Storage:	Store at -20°C as received.
Stability:	Stable for 12 months from date of receipt.
Gene Name:	ERCC excision repair 1, endonuclease non-catalytic subunit
Database Link:	NP_973730 Entrez Gene 13870 Mouse Entrez Gene 2067 Human P07992
Synonyms:	COFS4; RAD10; UV20
Protein Families:	Druggable Genome
Protein Pathways:	Nucleotide excision repair

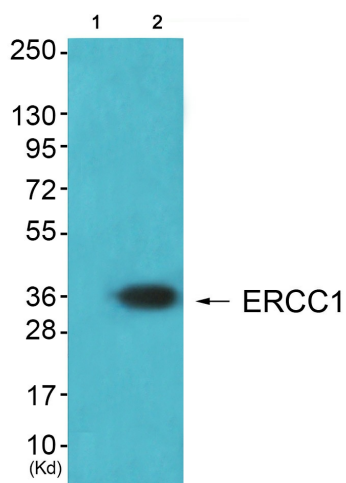


[View online »](#)

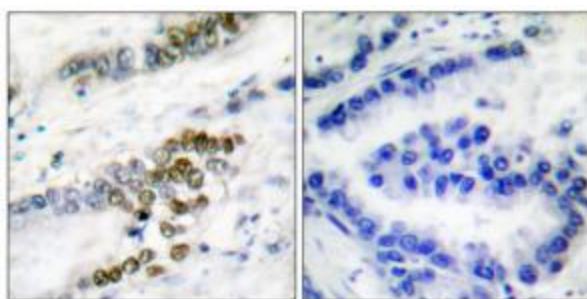
Product images:



Western blot analysis of extracts from NIH/3T3 cells, using ERCC1 antibody (#TA326228). The lane on the right is treated with the synthesized peptide.



Western blot analysis of extracts from HeLa cells (Lane 2), using ERCC1 Antibody. The lane on the left is treated with synthesized peptide.



Immunohistochemical analysis of paraffin-embedded human lung carcinoma tissue using ERCC1 antibody (#TA326228). The picture on the right is treated with the synthesized peptide.