

Product datasheet for **TA326227**

ERAB (HSD17B10) Rabbit Polyclonal Antibody

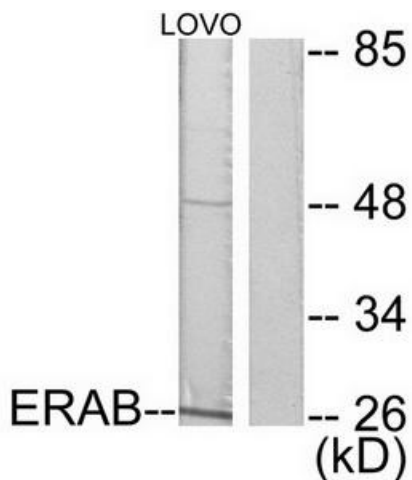
Product data:

Product Type:	Primary Antibodies
Applications:	IHC, WB
Recommended Dilution:	WB: 1:500~1:3000 IHC: 1:50~1:100ELISA: 1:5000
Reactivity:	Human, Mouse, Rat
Host:	Rabbit
Isotype:	IgG
Clonality:	Polyclonal
Immunogen:	The antiserum was produced against synthesized peptide derived from human ERAB.
Formulation:	Phosphate buffered saline (without Mg ²⁺ and Ca ²⁺), pH 7.4, 150mM NaCl, 0.02% sodium azide and 50% glycerol.
Concentration:	lot specific
Purification:	The antibody was affinity-purified from rabbit antiserum by affinity-chromatography using epitope-specific immunogen.
Conjugation:	Unconjugated
Storage:	Store at -20°C as received.
Stability:	Stable for 12 months from date of receipt.
Gene Name:	hydroxysteroid (17-beta) dehydrogenase 10
Database Link:	NP_004484 Entrez Gene 15108 Mouse Entrez Gene 63864 Rat Entrez Gene 3028 Human Q99714
Synonyms:	17b-HSD10; ABAD; CAMR; DUPXp11.22; ERAB; HADH2; HCD2; MHBD; MRPP2; MRX17; MRX31; MRXS10; SCHAD
Protein Families:	Druggable Genome
Protein Pathways:	Alzheimer's disease, Metabolic pathways, Valine, leucine and isoleucine degradation

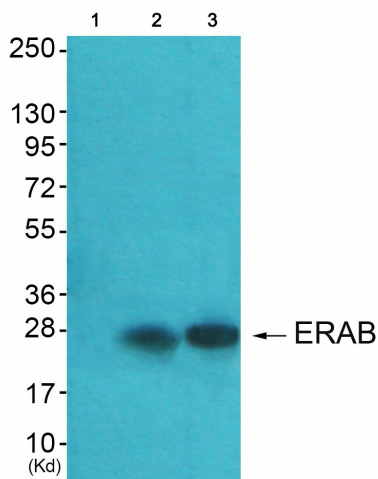


[View online »](#)

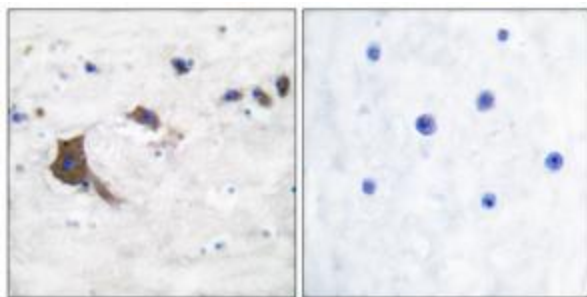
Product images:



Western blot analysis of extracts from LOVO cells, using ERAB antibody. The lane on the right is treated with the synthesized peptide.



Western blot analysis of extracts from A549 cells (Lane 2) and HeLa cells (Lane 3), using ERAB Antibody. The lane on the left is treated with synthesized peptide.



Immunohistochemical analysis of paraffin-embedded human brain tissue using ERAB antibody. The picture on the right is treated with the synthesized peptide.