

Product datasheet for **TA326217**

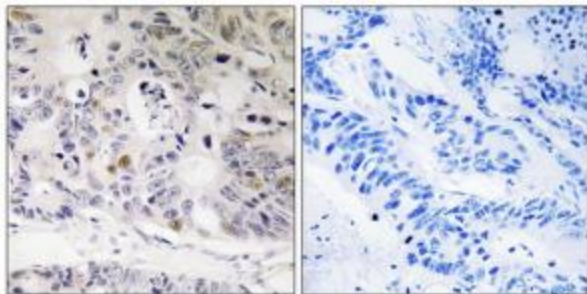
UBTD1 Rabbit Polyclonal Antibody

Product data:

Product Type:	Primary Antibodies
Applications:	IHC
Recommended Dilution:	IHC: 1:50~1:100 ELISA: 1:20000
Reactivity:	Human, Mouse, Rat
Host:	Rabbit
Isotype:	IgG
Clonality:	Polyclonal
Immunogen:	The antiserum was produced against synthesized peptide derived from internal of human UBTD1.
Formulation:	Phosphate buffered saline (without Mg ²⁺ and Ca ²⁺), pH 7.4, 150mM NaCl, 0.02% sodium azide and 50% glycerol.
Concentration:	lot specific
Purification:	The antibody was affinity-purified from rabbit antiserum by affinity-chromatography using epitope-specific immunogen.
Conjugation:	Unconjugated
Storage:	Store at -20°C as received.
Stability:	Stable for 12 months from date of receipt.
Gene Name:	ubiquitin domain containing 1
Database Link:	NP_079230 Entrez Gene 226122 MouseEntrez Gene 309373 RatEntrez Gene 80019 Human Q9HAC8
Synonyms:	FLJ11807
Protein Families:	Druggable Genome



[View online »](#)

Product images:

Immunohistochemistry analysis of paraffin-embedded human colon carcinoma tissue using UBTD1 antibody. The picture on the right is treated with the synthesized peptide.