

Product datasheet for **TA326211**

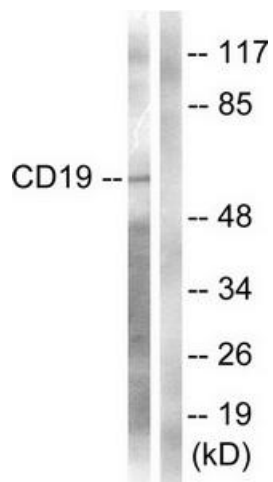
CD19 Rabbit Polyclonal Antibody

Product data:

Product Type:	Primary Antibodies
Applications:	WB
Recommended Dilution:	WB: 1:500~1:3000 ELISA: 1:1000
Reactivity:	Human, Mouse
Host:	Rabbit
Isotype:	IgG
Clonality:	Polyclonal
Immunogen:	The antiserum was produced against synthesized non-phosphopeptide derived from human CD19 around the phosphorylation site of tyrosine 531 (D-S-YP-E-N).
Formulation:	Phosphate buffered saline (without Mg ²⁺ and Ca ²⁺), pH 7.4, 150mM NaCl, 0.02% sodium azide and 50% glycerol.
Concentration:	lot specific
Purification:	The antibody was affinity-purified from rabbit antiserum by affinity-chromatography using epitope-specific immunogen.
Conjugation:	Unconjugated
Storage:	Store at -20°C as received.
Stability:	Stable for 12 months from date of receipt.
Gene Name:	CD19 molecule
Database Link:	NP_001761 Entrez Gene 12478 Mouse Entrez Gene 930 Human P15391
Synonyms:	B4; CVID3
Protein Families:	Druggable Genome, Transmembrane
Protein Pathways:	B cell receptor signaling pathway, Hematopoietic cell lineage, Primary immunodeficiency



[View online »](#)

Product images:

Western blot analysis of extracts from COS7 cells, treated with Serum (10%, 30mins), using CD19 (Ab-531) Antibody. The lane on the right is treated with the synthesized peptide.