

Product datasheet for **TA326208**

alpha Tubulin (TUBA4A) Rabbit Polyclonal Antibody

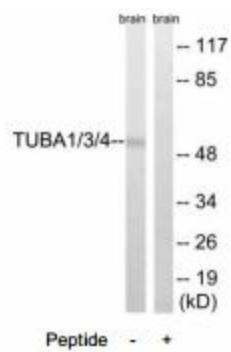
Product data:

Product Type:	Primary Antibodies
Applications:	WB
Recommended Dilution:	WB: 1:500~1:3000 IHC: 1:50~1:100 ELISA: 1:40000
Reactivity:	Human, Mouse, Rat
Host:	Rabbit
Isotype:	IgG
Clonality:	Polyclonal
Immunogen:	The antiserum was produced against synthesized non-phosphopeptide derived from human TUBA1/3/4 around the phosphorylation site of tyrosine 272 (A-T-YP-A-P).
Formulation:	Phosphate buffered saline (without Mg ²⁺ and Ca ²⁺), pH 7.4, 150mM NaCl, 0.02% sodium azide and 50% glycerol.
Concentration:	lot specific
Purification:	The antibody was affinity-purified from rabbit antiserum by affinity-chromatography using epitope-specific immunogen.
Conjugation:	Unconjugated
Storage:	Store at -20°C as received.
Stability:	Stable for 12 months from date of receipt.
Gene Name:	tubulin alpha 4a
Database Link:	NP_001265481 Entrez Gene 22145 MouseEntrez Gene 316531 RatEntrez Gene 7277 Human P68366
Synonyms:	ALS22; H2-ALPHA; TUBA1
Protein Families:	Druggable Genome
Protein Pathways:	Gap junction, Pathogenic Escherichia coli infection



[View online »](#)

Product images:



Western blot analysis of extracts from Rat brain cells, using TUBA1/3/4 (Ab-272) antibody.