

Product datasheet for **TA326207**

ROCK2 Rabbit Polyclonal Antibody

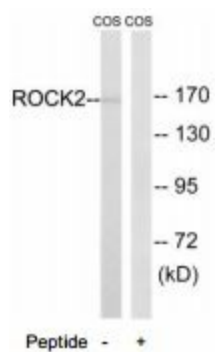
Product data:

Product Type:	Primary Antibodies
Applications:	WB
Recommended Dilution:	WB: 1:500~1:3000 IHC: 1:50~1:100 ELISA: 1:40000
Reactivity:	Human, Mouse, Rat
Host:	Rabbit
Isotype:	IgG
Clonality:	Polyclonal
Immunogen:	The antiserum was produced against synthesized non-phosphopeptide derived from human ROCK2 around the phosphorylation site of tyrosine 722 (K-I-YP-E-S).
Formulation:	Phosphate buffered saline (without Mg ²⁺ and Ca ²⁺), pH 7.4, 150mM NaCl, 0.02% sodium azide and 50% glycerol.
Concentration:	lot specific
Purification:	The antibody was affinity-purified from rabbit antiserum by affinity-chromatography using epitope-specific immunogen.
Conjugation:	Unconjugated
Storage:	Store at -20°C as received.
Stability:	Stable for 12 months from date of receipt.
Gene Name:	Rho associated coiled-coil containing protein kinase 2
Database Link:	NP_004841 Entrez Gene 19878 Mouse Entrez Gene 25537 Rat Entrez Gene 9475 Human O75116
Synonyms:	ROCK-II
Protein Families:	Druggable Genome, Protein Kinase
Protein Pathways:	Axon guidance, Chemokine signaling pathway, Focal adhesion, Leukocyte transendothelial migration, Pathogenic Escherichia coli infection, Regulation of actin cytoskeleton, TGF-beta signaling pathway, Vascular smooth muscle contraction, Wnt signaling pathway



[View online »](#)

Product images:



Western blot analysis of extracts from Cos7 cells, using ROCK2 (Ab-722) antibody.