

## Product datasheet for **TA326201**

### GRK2 Rabbit Polyclonal Antibody

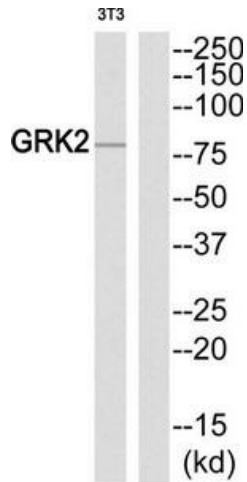
#### Product data:

Product Type:	Primary Antibodies
Applications:	WB
Recommended Dilution:	WB: 1:500~1:3000 ELISA: 1:10000
Reactivity:	Human, Mouse, Rat
Host:	Rabbit
Isotype:	IgG
Clonality:	Polyclonal
Immunogen:	The antiserum was produced against synthesized peptide derived from N-terminal of human ADRBK1.
Formulation:	Phosphate buffered saline (without Mg <sup>2+</sup> and Ca <sup>2+</sup> ), pH 7.4, 150mM NaCl, 0.02% sodium azide and 50% glycerol.
Concentration:	lot specific
Purification:	The antibody was affinity-purified from rabbit antiserum by affinity-chromatography using epitope-specific immunogen.
Conjugation:	Unconjugated
Storage:	Store at -20°C as received.
Stability:	Stable for 12 months from date of receipt.
Gene Name:	G protein-coupled receptor kinase 2
Database Link:	<a href="#">NP_001610</a> <a href="#">Entrez Gene 25238 Rat</a> <a href="#">Entrez Gene 110355 Mouse</a> <a href="#">Entrez Gene 156 Human</a> <a href="#">P25098</a>
Synonyms:	ADRBK1; BARK1; BETA-ARK1
Protein Families:	Druggable Genome, Protein Kinase
Protein Pathways:	Chemokine signaling pathway, Endocytosis

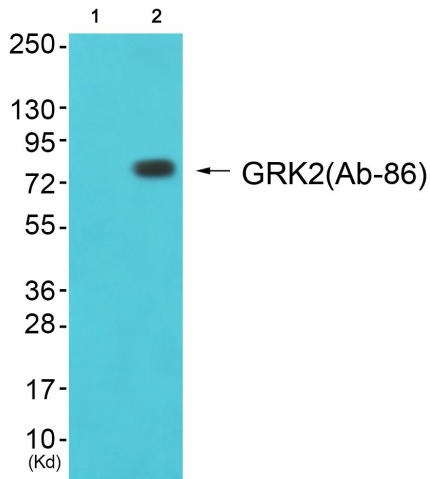


[View online »](#)

Product images:



Western blot analysis of extracts from NIH-3T3 cells, using GRK2 (Ab-86) Antibody. The lane on the right is treated with the synthesized peptide.



Western blot analysis of extracts from cos-7 cells (Lane 2), using GRK2 (Ab-86) Antibody. The lane on the left is treated with synthesized peptide.