

## Product datasheet for **TA326196**

### CDX2 Rabbit Polyclonal Antibody

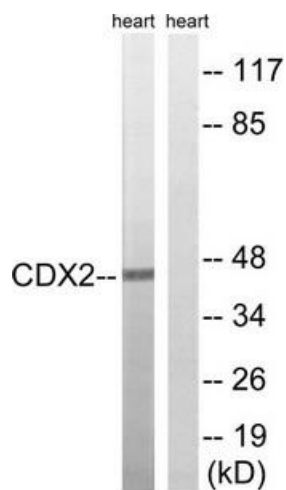
#### Product data:

Product Type:	Primary Antibodies
Applications:	WB
Recommended Dilution:	WB: 1:500~1:3000 ELISA: 1:1000
Reactivity:	Human, Mouse, Rat
Host:	Rabbit
Isotype:	IgG
Clonality:	Polyclonal
Immunogen:	The antiserum was produced against synthesized non-phosphopeptide derived from human CDX2 around the phosphorylation site of serine 283 (P-L-SP-P-V).
Formulation:	Phosphate buffered saline (without Mg <sup>2+</sup> and Ca <sup>2+</sup> ), pH 7.4, 150mM NaCl, 0.02% sodium azide and 50% glycerol.
Concentration:	lot specific
Purification:	The antibody was affinity-purified from rabbit antiserum by affinity-chromatography using epitope-specific immunogen.
Conjugation:	Unconjugated
Storage:	Store at -20°C as received.
Stability:	Stable for 12 months from date of receipt.
Gene Name:	caudal type homeobox 2
Database Link:	<a href="#">NP_001256</a> <a href="#">Entrez Gene 12591 Mouse</a> <a href="#">Entrez Gene 66019 Rat</a> <a href="#">Entrez Gene 1045 Human</a> <a href="#">Q99626</a>
Synonyms:	AS; CDX-3; CDX2; CDX3
Protein Families:	Adult stem cells, Druggable Genome, Embryonic stem cells, ES Cell Differentiation/IPS, Transcription Factors



[View online »](#)

## Product images:



Western blot analysis of extracts from rat heart cells, using CDX2 (Ab-283) antibody. The lane on the right is treated with the synthesized peptide.