

## Product datasheet for **TA326194**

### **B Raf (BRAF) Rabbit Polyclonal Antibody**

#### **Product data:**

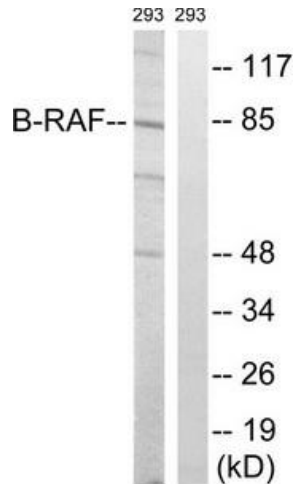
<b>Product Type:</b>	Primary Antibodies
<b>Applications:</b>	IHC, WB
<b>Recommended Dilution:</b>	WB: 1:500~1:3000 IHC: 1:50~1:100 ELISA: 1:40000
<b>Reactivity:</b>	Human, Mouse
<b>Host:</b>	Rabbit
<b>Isotype:</b>	IgG
<b>Clonality:</b>	Polyclonal
<b>Immunogen:</b>	The antiserum was produced against synthesized non-phosphopeptide derived from human B-RAF around the phosphorylation site of serine 446 (R-D-SP-S-D).
<b>Formulation:</b>	Phosphate buffered saline (without Mg <sup>2+</sup> and Ca <sup>2+</sup> ), pH 7.4, 150mM NaCl, 0.02% sodium azide and 50% glycerol.
<b>Concentration:</b>	lot specific
<b>Purification:</b>	The antibody was affinity-purified from rabbit antiserum by affinity-chromatography using epitope-specific immunogen.
<b>Conjugation:</b>	Unconjugated
<b>Storage:</b>	Store at -20°C as received.
<b>Stability:</b>	Stable for 12 months from date of receipt.
<b>Gene Name:</b>	B-Raf proto-oncogene, serine/threonine kinase
<b>Database Link:</b>	<a href="#">NP_004324</a> <a href="#">Entrez Gene 109880 Mouse</a> <a href="#">Entrez Gene 673 Human</a> <a href="#">P15056</a>
<b>Synonyms:</b>	B-raf; B-RAF1; BRAF1; NS7; RAFB1
<b>Protein Families:</b>	Druggable Genome, Protein Kinase



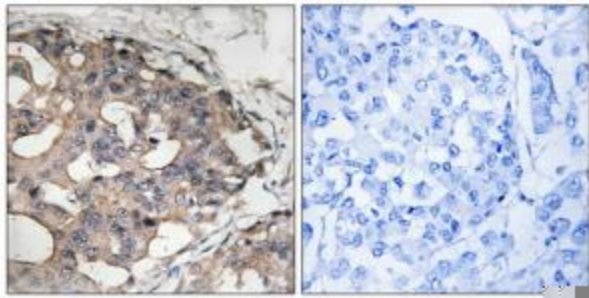
[View online »](#)

**Protein Pathways:**

Acute myeloid leukemia, Bladder cancer, Chemokine signaling pathway, Chronic myeloid leukemia, Colorectal cancer, Endometrial cancer, ErbB signaling pathway, Focal adhesion, Glioma, Insulin signaling pathway, Long-term depression, Long-term potentiation, MAPK signaling pathway, Melanoma, mTOR signaling pathway, Natural killer cell mediated cytotoxicity, Neurotrophin signaling pathway, Non-small cell lung cancer, Pancreatic cancer, Pathways in cancer, Progesterone-mediated oocyte maturation, Prostate cancer, Regulation of actin cytoskeleton, Renal cell carcinoma, Thyroid cancer, Vascular smooth muscle contraction

**Product images:**


Western blot analysis of extracts from 293 cells, treated with insulin (0.01U/ml, 15mins), using B-RAF (Ab-446) antibody. The lane on the right is treated with the synthesized peptide.



Immunohistochemistry analysis of paraffin-embedded human breast carcinoma tissue using B-RAF (Ab-446) antibody. The picture on the right is treated with the synthesized peptide.